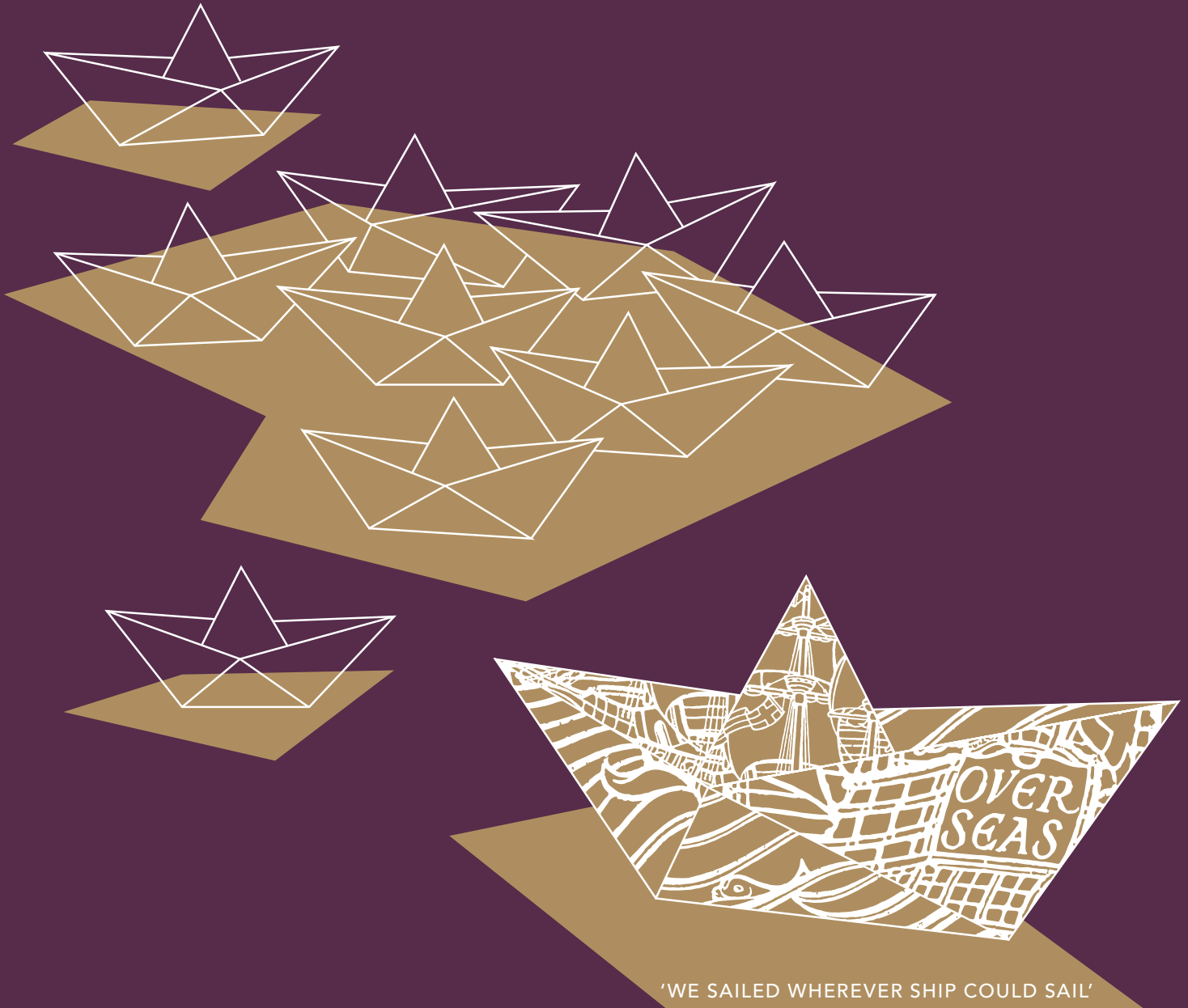


# OVERSEAS

THE JOURNAL OF THE ROYAL OVER-SEAS LEAGUE



## 100 YEARS OF OVERSEAS

Special section celebrating the centenary of your journal

## INSPIRING SOUNDS

How to get the most out of the ROSL Music Competition

## FRINGE TRIUMPH

Why our festival programme was the most ambitious yet



**ROSL**  
ROYAL OVER-SEAS LEAGUE

# SPIRIO

*Cherish it. Play it. Hear it.*

**DANCE YOUR HEART OUT TO IT.**



Presenting the first high-resolution *player piano* worthy of the revered Steinway & Sons name. The Steinway Spirio is a masterpiece of artistry, craftsmanship and engineering that delivers all the nuance and passion of live performances by today's most renowned musicians from classical to jazz to rock. [STEINWAYSPIRIO.COM](http://STEINWAYSPIRIO.COM)

**STEINWAY HALL** LONDON 44 MARYLEBONE LANE, LONDON W1U 2DB

FOR MORE INFORMATION OR TO ARRANGE A PRIVATE  
APPOINTMENT TO EXPERIENCE THE STEINWAY SPIRIO  
AT OUR LONDON SHOWROOMS, PLEASE CALL:

**+44 (0)207 487 3391** OR EMAIL [INFO@STEINWAY.CO.UK](mailto:INFO@STEINWAY.CO.UK)



**STEINWAY & SONS**

The Royal Over-Seas League is a self-funded Commonwealth organisation that offers clubhouse facilities to members, organises Commonwealth art and music competitions and develops joint welfare projects with specific countries.

Front Cover Juliette Poggi  
© ROSL

#### OVERSEAS EDITORIAL TEAM

Editor Ms Miranda Moore: editor@rosl.org.uk

Deputy Editor Ms Christine Wilde:  
+44 (0)20 7408 0214 x205; cwilde@rosl.org.uk

Design Zed: www.zedpublishing.co.uk

Display advertisements Ms Gemma Matthews:  
+44 (0)20 7016 6904; gmatthews@rosl.org.uk

#### ROYAL OVER-SEAS LEAGUE

Incorporated by Royal Charter

Patron Her Majesty The Queen

Vice-Patron Her Royal Highness  
Princess Alexandra KG GCVO

President The Rt Hon the Lord Luce KG GCVO DL

Chairman Mr Simon Ward FCA\*

Vice-Chairman Sir Roger Carrick KCMG LVO\*

Hon Treasurer Mr John Harbor FCA\*

Over-Seas House, Park Place, St James's Street,  
London SW1A 1LR; +44 (0)20 7408 0214;  
Fax +44 (0)20 7499 6738; info@rosl.org.uk;  
www.rosl.org.uk

Over-Seas House, 100 Princes Street, Edinburgh  
EH2 3AB; +44 (0)131 225 1501;  
Fax +44 (0)131 226 3936;  
reception@rosl-edinburgh.org;  
www.rosl-edinburgh.org

#### CENTRAL COUNCIL

Mr Graham Archer CMG\*, Mrs Mae Barr MBE,  
Mr Clive Carpenter, Prof Monojit Chatterji,  
Mr Sohail Choudhry, Prof Meryll Dean,  
Mr John Edwards CMG, Mr David Fall CMG\*,  
Mr Simon Gimson LVO, Mr Peter Hamlyn\*,  
Miss Maureen Howley MBE\*, Mrs Frances King,  
Mr Tony Lavender, Prof Eve Mitleton-Kelly,  
Mr David Nicholson, Mr Tony Roestenburg,  
Miss Caroline Roddis, Ms Lindsay Ross, Mrs Judith  
Steiner, Mrs Pamela Voice, Mr Frank Wibaut  
\*Executive Committee

Director-General Maj Gen Roddy Porter MBE:  
+44 (0)20 7408 0214 x201

Director of Administration and Finance

Mr Shakil Tayub: +44 (0)20 7408 0214 x209

Director of Marketing Ms Gemma Matthews:

+44 (0)20 7408 0214 x204; gmatthews@rosl.org.uk

Director of Humanitarian and Education Projects

Ms Margaret Adrian-Vallance MBE:

+44 (0)20 7408 0214 x307; mvallance@rosl.org.uk

Assistant to D-G Ms Arabella Beresford-Mitchell:

+44 (0)20 7408 0214 x201;

aberesford-mitchell@rosl.org.uk

Head of Membership Mr Stephen Darlington:

+44 (0)20 7408 0214 x214; sdarlington@rosl.org.uk

Catering Operations Director

Ms Louise Leighton-Rees: +44 (0)7809 322 591;

louise.leighton-rees@graysonsrestaurants.com

Edinburgh House Manager Mr Daniel Campbell:

reception@rosl-edinburgh.org

Print Hastings Printing Company: +44 (0)1424 720 477

The journal is published by the Royal Over-Seas League,  
Over-Seas House, Park Place, St James's Street, London SW1A  
1LR. Any views expressed in editorial and any advertisements  
included are not necessarily endorsed by the Central Council.  
ISSN 00307424

## "In 100 years, the format of *Overseas* has changed but its message has not"



*Overseas* has now been the primary means of communication with ROSL's members for 100 years. In that time, its format and frequency of publication have changed markedly but its central message has not. That message, which resonates through every edition and every activity that we undertake, is of an exuberant, talented, diverse and committed family of members and staff, wishing to spread friendship and hope around the globe and, in so doing, fulfilling our founder's aspiration to "do good to humanity at large".

Roderick Lakin's life was an abundant expression of such vitality. His motivation was to afford opportunity for young artistic talent to blossom wherever in the Commonwealth that talent could be unearthed. His heart and soul found purpose in expounding our values through art and music. Roderick had so much more to achieve, ideas and hopes to realise, and his passing has numbed us to the core. We share his aspirations and are determined that the blazing light that was our colleague and friend is not extinguished. As we cherish his memory and take steps to preserve it, and as we seek to support his wife Margaret, we will be moving the ROSL ARTS programme forward to, we believe, the heights to which Roderick aspired.

My staff and I are immensely grateful for the vast number of messages of sorrow and condolence that we have received. We are also overwhelmed by the very many offers of support and practical help from around the world, from every corner of the ROSL family and the arts community. This has given great assurance and is further validation, if such were needed, of Evelyn Wrench's purpose when he penned his first editorial a century ago.

**Roddy Porter**  
DIRECTOR-GENERAL



# 24

“How is it that the competition has the knack of selecting musicians who so frequently go on to become international personalities?”



## WELCOME

- 3. From the Director-General**  
Roddy Porter marks the Overseas centenary and remembers our friend and colleague Roderick Lakin

## ROSL NEWS

- 6. ROSL's blazing light**  
Remembering Roderick Lakin, ROSL's Director of Arts for 31 years
- 9. Roderick Lakin MBE**  
A tribute from ROSL Chairman Simon Ward
- 10. The spirit of the Fringe**  
Why the Edinburgh Festival programme was ROSL's biggest concert series ever
- 12. An unforgettable experience**  
Cellist Alexander Arai-Swale on a life-changing scholarship
- 13. Raising expectations**  
Australian violist Jared Yapp on the impact of the ROSL Travel Award
- 14. Artists in residence**  
Revealing the diversity of our new Visual Arts Scholars for 2015

- 15. Improbable success**  
Previewing ROSL artist Julie Favreau's immersive video work

- 16. ROSL branches**  
Forthcoming events around the world

- 20. News and views**  
Stunning pictures of recent ROSL events

- 23. Stirred not shaken**  
Step inside the Inter-Club Ball

- 24. Music Competition: An audience guide**  
How to get the most out of the annual contest

## CENTENARY

- 26. 100 years of communication**  
Lord Luce traces the history of Overseas
- 27. Spreading the word**  
Evelyn Wrench's vision for the magazine
- 28. Overseas through the ages**  
Delve into 100 years of archive materials; with a timeline of key events
- 31. Breaking news**  
Charting Lord Northcliffe's influence on the journal



© James McCormick

# From the EDITOR

To celebrate 100 years of *Overseas*, we established a competition with students of the Royal College of Art (RCA), asking them to submit a contemporary interpretation of the iconic cover designed by Macdonald Gill. The competition continues a long tradition both of featuring original artwork using the ship motif on the journal's cover, and of ROSL's work with RCA students. After much deliberation, Juliette Poggi's clever subversion of the concept was selected. As she explained, the design looks to new generations, playfully shaping elements of the Gill cover while keeping its original spirit and history. In the next issue, you will be able to decide whether you agree with the judges' choice, when we print the shortlisted works and an article about the process.

The journal's success is, perhaps, unsurprising, given the editorial credentials of the club's founder, Sir Evelyn Wrench and financial backer, Lord Northcliffe (see pages 26-31). In this centenary issue, we feature articles by three writers who developed their skills as young deputy editors at *Overseas* and continue to work in magazine editorial: Ivy Storvik at [matchesfashion.com](http://matchesfashion.com), and Samantha Whitaker and Claire Simon reuniting at Sunday Publishing.

Claire catches up with ROSL NZ Director Lyn Milne, whose 40-year journey with ROSL began in 1977 as Marketing and Events Coordinator (page 32). The two share their experiences of working at Over-Seas House, more than 30 years apart, in roles that have traditionally worked closely together. Elsewhere, members of the Editorial Team pick our favourite haunts close to the clubhouses – from sports stadiums and pub theatres in London to historic buildings and a comedy venue in Edinburgh (page 36).

Our People and World sections in this issue are greatly reduced due to the Centenary focus and our special tribute to Roderick Lakin MBE. We remember his tireless support of talented young artists, engaging personality and vitality. He will be sadly missed.

**Miranda Moore**  
editor@rosl.org.uk

## ROSL PEOPLE

- 32. Q&A: Lyn Milne**  
The NZ Director on  
40 years with ROSL

## WORLD

- 34. Fabergé at home**  
A walk through Russia's  
cultural capital
- 35. Making a difference**  
Tips and insights into  
volunteering abroad

## IN THE UK

- 36. Treasured places**  
The Editorial Team's  
favourite haunts

- 37. London & Edinburgh  
highlights**  
Top events this winter

## EVENTS

- 38. Christmas and  
New Year at ROSL**  
Don't miss our special  
festive packages
- 38. Highlights**  
Dancing at the clubhouse;  
plus two exciting trips
- 40. ROSL calendar**  
Details of all our  
fantastic events
- 46. Contact details and  
booking information**



# ROSL NEWS

*The latest from our clubhouses, branches, and art, music and humanitarian projects*

## ROSL's blazing light

The many ROSL members, staff, musicians and artists supported by ROSL Director of Arts, Roderick Lakin, over the years have paid tribute to the man who gave so much to ROSL, to his friends and family, and to talented young artists around the world. We share just a few of their memories here

“

One of my happiest memories of Roderick is from when he and I were asked to provide a small orchestra to perform for The Queen on board the Royal Yacht Britannia at the 1993 Commonwealth Heads of Government Meeting in Cyprus. We took with us a group of young musicians from around the Commonwealth, none of whom had met beforehand. Within just a few days of our arrival Roderick had moulded them into a wonderful Commonwealth Youth Orchestra. It was, for me, another example of Roderick's extraordinary musicianship, organisational skills, and ability to relate to and motivate young people. We spent a week in Limassol and it was the first of many happy times we spent together at music events overseas.

*Robert Newell CVO*  
ROSL DIRECTOR-GENERAL  
1991-2011

“

Roderick always made occasions into memorable events. Even in the midst of very professionally-run concerts he managed to make things just that little bit more special. I remember having a picnic lunch with him in the middle of a field before a concert in the Newbury Spring Festival, complete with 'proper' cutlery whisked out of a basket. We climbed the Sydney Harbour Bridge before a concert in Australia. We went to an extraordinary late-night theatre show in Edinburgh which began at 1am. He always knew where the best restaurants were in any part of the world, and taught me the value of proper research in advance of any trip. I will remember him as someone who instinctively knew how to turn something everyday into something magical – he had the Midas touch.

*Stephen De Pledge*  
PIANIST AND 1998 ROSL  
ACCOMPANIST AWARD WINNER

“

Shortly after we were individual prizewinners in the ROSL music competitions of 1992/93, Roderick took the Plane-Dukes-Rahman Trio to Scotland. He decided that we needed some publicity photos and that it would be a great idea to take them from the roof of the Edinburgh clubhouse. We duly traipsed

to the top of the building and Roderick battled with photographic paraphernalia plus the bracing Edinburgh winds, managing all the while to coax relaxed-looking shots out of us by dint of his highly entertaining, engaging personality. Touring with Roderick was a joy. Decades on, he continued



© Margaret Lakin



1. **Honour:** Roderick with Margaret after he was awarded MBE in 2004.  
 2. **Partnership:** With Isla Baring, Tait Memorial Trust Chairman. 3. **Engaging:** Roderick opens the 2005 Annual Music Competition Final. 4. **Dedication:** With

Gavin Henderson and HRH Princess Alexandra at the 2014 Final. 5. **Guidance:** Roderick advises the Solem Quartet at the 2014 Final rehearsals. 6. **Friendship:** With Thorben Dittes at the 2005 Final. 7. **Success:** With the ARTS team in 2013.



2



3



4



5



7



6

to invite former prizewinners to judge and tour under ROSL auspices. New Zealand and Sri Lanka were notable for the quirky venues, gastronomic delights and shopping/cultural excursions he loved to seek out. He will be sorely missed.

*Sophia Rahman*

PIANIST AND 1992 ROSL ACCOMPANIST AWARD WINNER

I was first introduced to Roderick by Shirley Barr, a founding member and Trustee of the Tait Memorial Trust. Soon after they met, she discovered that Roderick had a very interesting and special collection of music reference books. She became closely connected with Roderick and ROSL as

a member of the Central Council, and suggested to me that the Tait Trust might consider offering an award within the ROSL Annual Music Competition. And so our happy association began in 1996, with our prizes over the years going to some exceptional young Australian artists who have gone on to build successful international careers. Roderick was such an enthusiastic supporter of the Commonwealth countries, and made regular visits to Australia and New Zealand, endlessly searching for prospective young musical talent. Heaven knows who will take his part; he is irreplaceable.

*Isla Baring OAM*

TAIT MEMORIAL TRUST  
FOUNDER AND CHAIRMAN

One of my many happy memories of working with Roderick is his little ritual of personally re-arranging the chairs in Princess Alexandra Hall before events that had not sold out. Mainly, this meant we would remove surplus ones and space out the remainder, so both artists and audience felt this was the intended audience size. While I found it immensely irritating at the time (why could the banqueting team not do this?), it has become one of my own mantras since – infuriating my own staff in turn. This simple little habit demonstrates amply how, for Roderick, the right, intimate concert experience, which allowed the music to speak directly to the audience, was

always of paramount concern – as it should be for all arts administrators.

*Thorben Dittes*

ROYAL NORTHERN SINFONIA DIRECTOR  
AND FORMER ROSL ARTS ASSISTANT

Roderick Lakin was a passionate supporter of the Caine Prize, hosting its shortlisted writers since its inception and providing a platform in his public events programme at ROSL to showcase some of Africa's most exciting writers. Warm, generous, efficient and funny, he willingly accepted book deliveries, commandeered cocktails, arranged photographs and made the authors feel at home in the heart of London.

*Lizzy Attree*

CAINE PRIZE DIRECTOR

Thanks to Roderick, I am in London pursuing my dreams as a chamber musician. At the last concert of the Edinburgh Fringe Festival in 2014, Michael Foyle and I performed the Franck Violin Sonata, which Roderick had kept as a surprise for Margaret to mark their wedding anniversary (it is her favourite piece). Walking off stage to a teary eyed Margaret and Roderick was the highlight of my time there and I will never forget the sheer happiness captured at that moment. Roderick lived to support us and the arts. I feel so blessed to have known him.

*Somi Kim*

PIANIST AND PETTMAN/  
ROSL ARTS SCHOLAR 2012  
(WITH THE ESTRELLA QUARTET)

# Tribute

ROSL NEWS

“

Each year, my husband Lino and I looked forward to late November/early December, when Roderick and Margaret Lakin would visit us in

Melbourne with a group of fine young musicians. We used to say Roderick represented the three 'E's: energy, enthusiasm and enlightenment. He would make first for the studio to set up the musicians for their rehearsal and then tour the studios, studying and absorbing paintings and colours. He was particularly taken with the works from my exhibition 'New Compositions in Colour', held at Over-Seas House London in 2015, and was keen for the proceeds to assist emerging young artists.

The rapport between Roderick, Margaret and the musicians was nothing short of amazing, and a joy to share. He was particularly fond of the acoustics in the studio and his presence lit up the room, filling us all with his energy, enthusiasm and enlightenment.

**Dr Di Bresciani OAM**

PAINTER, PIANIST, FOUNDER YMF AUSTRALIA AND ROSL MEMBER

“

Roderick and I first came together when he was running the Society for the Promotion of New Music and I was directing the South Hill Park Arts Centre in Bracknell. He enabled a number of composer projects to take place, but running a membership organisation in which each composer had their own ideas as to how things should be going was frustrating. Thus, it was refreshing for him to take on the ROSL ARTS programme,



1



2



3

where he could direct his own very individual scheme of events. Roderick generously supported concerts for the Brighton Festival and Dartington International Summer School when I was running them, but he had firm ideas as to who should do what. I had asked for a violinist, but he was determined that we should have an accordionist and such was his power of persuasion that I gave in. He was right of course, and I became a committed advocate of the accordion. Roderick later asked if I would chair the adjudication panel for the ROSL Annual Music Competition – just for a year, he said. Eight years later, I owe him a huge debt of gratitude for an involvement that I treasure.

**Gavin Henderson CBE**

PRINCIPAL AT THE ROYAL CENTRAL SCHOOL OF SPEECH AND DRAMA

## IN MEMORIAM

RODERICK'S FAMILY AND FRIENDS REMEMBER HIS ENERGY, VALUES AND SENSE OF FUN

“

I have been totally overwhelmed by the hundreds of messages of support, sympathy and love. It makes me very proud – and would have totally surprised Roderick – to know how highly he was esteemed and how affectionately he was held by all. It was – and is – a huge comfort to me, and I thank you all.

**Margaret Lakin**

RODERICK'S WIFE

“

A common way of summing up the individual life is to compare it to a candle. It is an analogy which expresses something of the spluttering fragility of life. And when we consider the abrupt and cruel way in which Roderick was felled, in the simple act of crossing from one side of an Edinburgh street to the other, then Macbeth's 'brief candle' would seem to have the truth of the matter. Some candles do flicker and fade but there are others which flare with a luminosity sufficiently strong to leave us with an afterglow that will brighten the memory and allow us to bask forever in the warmth of its originator. And so it is with Roderick.

**David Northcroft**

RODERICK'S BROTHER-IN-LAW

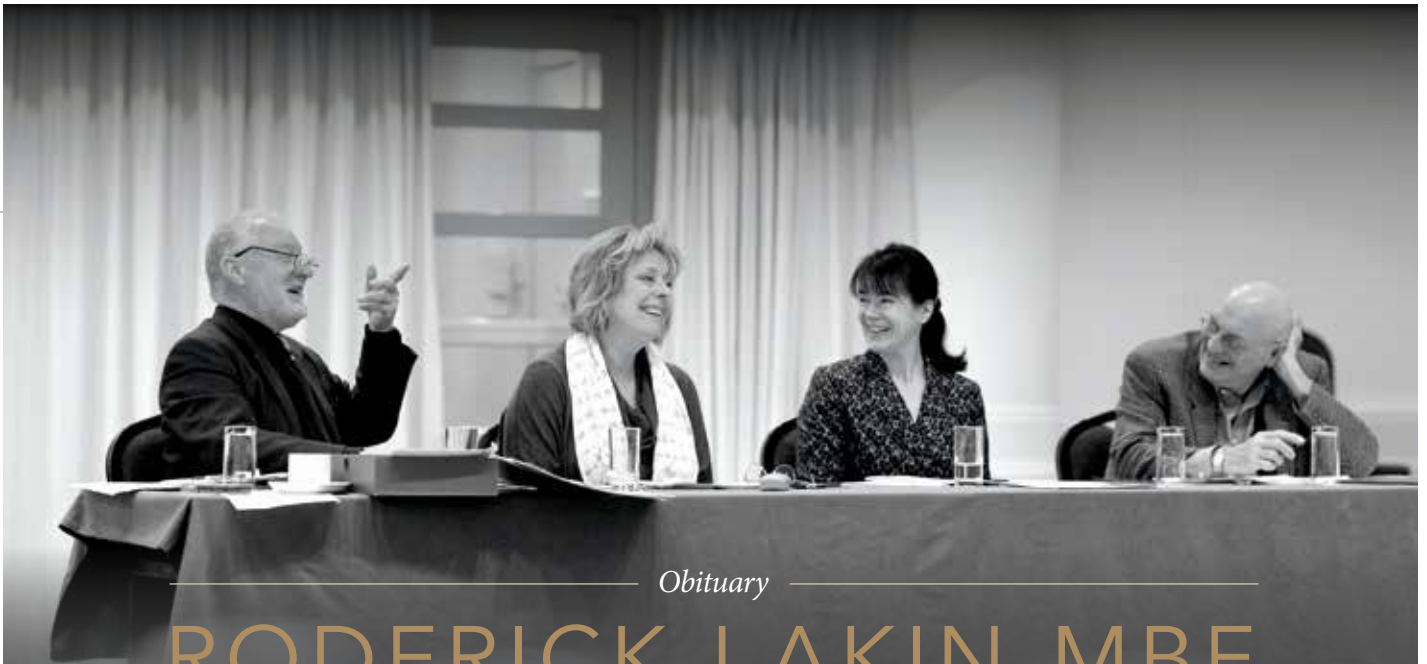
“

Roderick liked to walk on the sunny side of the street. Roderick, my friend for more than 50 years, was an optimist. He looked for opportunities to spread joy and humour. His death demands something from me, from all of us. And that can only be a re-dedication to the principles and values by which he lived his life: work hard, be a 'can do' and not a 'cannot' person, look for the expression of truth, eat well, drink well and be serious about your fun.

**Kenneth Bews**

RODERICK'S CHILDHOOD FRIEND AND BEST MAN





Obituary

# RODERICK LAKIN MBE

Roderick's tragic death on 28 August 2015 remains a devastating event for so many; his family, colleagues and friends, ROSL members, and musicians and artists across the globe. This is one measure of the man we loved, enjoyed laughing and working with, admired and respected.

**A**t all the musical events Roderick masterminded, it was abundantly clear what a fine team he and Margaret made – she in constant support; he paying attention, as any good and wise husband should. Roderick and Margaret were a dearly held part of ROSL. Margaret must know that she will continue to be a much loved part of that family.

Teamwork was Roderick's style and practice. He always built ROSL ARTS teams that worked closely, cheerfully and effectively together with their complementary skills. He used to say that he needed someone on the team to remain calm while he was under pressure meeting the frequent deadlines his packed calendar of events imposed.

His success at selecting the right, able people was amply demonstrated when the team rallied round to keep the Edinburgh concert series going while he fought for his life in hospital. They knew that was what he wanted.

Roderick excelled at helping the young to start and follow their careers in the visual arts, literature and music.

He led in all those areas with insight, drive and compassion, for which he was appointed MBE in 2004 and received an honorary degree from the Royal Academy of Music in 2007. His care for artists whose exhibitions we enjoyed in London and Edinburgh, and for contenders in the Caine Prize for African Writing, was equally enthusiastic.

Without doubt Roderick's particular love and erudition lay in music: hundreds of musicians throughout the Commonwealth have been positively touched by his work. He revelled in their successes and gave them many opportunities to perform, setting up the ROSL ARTS programme to take our support of prizewinning musicians beyond the Annual Music Competition (AMC). The acclaimed Edinburgh Fringe 'Music @ 100 Princes Street', which he first presented in 2000, is but one example of this support.

He was the driving force behind the transformation of the old St Andrew's Hall into Princess Alexandra Hall, so valued by players and audiences alike. In 2000, Roderick formed the Friends of ROSL ARTS; its continuing vibrancy

is testament to his ability to enthuse so many.

His involvement around the world in promoting music scholarships was total. The enduring success of the AMC is the clearest possible statement of all Roderick aimed for and achieved. Under his guidance, the competition has grown immeasurably. To mark ROSL's centenary, he founded the Centenary Appeal, endowing the awards with more than £60,000 annually. Thus, ROSL was able not only to secure the future of the competition, but to develop it into one of the most substantial prizes in the UK.

The ROSL family has been immensely privileged to have known and worked with Roderick over his 31 years among us. We all miss him terribly; but his memory will be with us, happily, for many, many years to come.

*Weep if you must  
Parting is hell  
But life goes on  
So sing as well  
(Joyce Grenfell)*

**Simon Ward, ROSL Chairman**

## Concert series

ROSL NEWS

1. **On the roof:** Simon Lepper *piano*, Gillian Keith *soprano*, Matthew Sharp *baritone/cello* and Viv McLean *piano*. 2. **Private view:** The Leo du Feu exhibition. 3. **Star strings:** Alistair Vennart *viola*, Amy Tress *violin*, Somi Kim *piano*, Stephanie Tress *cello* and

Toby Hughes *double bass*. 4. **On show:** Roderick introduces the musicians. 5. **Sold out:** Peter Foggitt *piano* and Huw Wiggins *saxophone*. 6. **Scholars:** QUATTRO prepare. 7. **Eclectic fusion:** Michael Haywood *violin* and Paul Chamberlain *accordion*.

# THE SPIRIT OF THE FRINGE

With 38 musicians, three artists and two authors, this was ROSL's biggest Edinburgh Festival Fringe programme ever. Tait Becke shares his highlights of this phenomenal three-week series

ROSL ARTS visited Edinburgh from 9-29 August for its 16th series of concerts during the Festival Fringe, featuring a newly conceived third week, a larger cast of musicians, and fresh show ideas ranging from literary events to a children's show. At the end of it all, 38 musicians and two authors from across the Commonwealth had put on 50 shows, making it the largest concert series ROSL ARTS has ever organised.

The first week began with a bang, with the start of ten consecutive sold-out early morning shows, a perennial favourite among festival goers. A high point of the first week was Stephen de Pledge taking the stage. It brought him full circle from competition winner in 1998 and Fringe participant in 1999. This lasting relationship between ROSL and the artists we work with sets us apart from other organisations and we are very proud of it.





1



## The talk of Twitter

JUST SOME OF THE GREAT TWEETS SHARED DURING OUR FRINGE PROGRAMME

 @RobertHarper  
Such a wonderful hour of music @roslarts from the @SolemQuartet. Beautiful. Just beautiful. They're on again on Friday. Go! #edinburgh

 @seanaajones  
@peterfoggitt was funnier than most of the comedians I've seen this year. Not bad on the old piano too #Fringe

 @hannahkross  
Really enjoyed #TommyFoggo Superhero at @rosl1910. Funny, dark, charming + best use of school projector ever! Catch it Sat AM with/out kids!

The second week boasted a star-studded cast of recent competition winners, headlined by the last two Gold Medal winners: pianist Alex Soares and saxophonist Huw Wiggin. 'Shostakovich Late' on Tuesday evening received five stars from *The Herald*. 'More Sax before Midnight' on Thursday, the second iteration of the popular 'Sax before Midnight' series, featured the peerless Peter Foggitt piano, improvising a ballade in the style of Chopin, based on themes suggested by the audience. Huw Wiggin followed with a medley of saxophone show pieces that few musicians could even begin to think of attempting. Needless to say, this sold-out performance was an instant classic! The week was rounded off with the private view of ROSL artist Leo du Feu's exhibition of watercolours, which was a great success.

Amid the achievements of the second week, ROSL ARTS was dealt a terrible blow when Roderick Lakin was tragically struck by a bus. Every single musician and staff member in the Edinburgh clubhouse responded with



“  
The newly created third week of shows was a testing ground for a whole bunch of new ideas. The first ever Sunday Brunch at the Fringe was a smash hit, as we sold out the venue completely.

absolute magnificence. The courage and emotional fortitude of the musicians, along with contributions above and beyond the call of duty from the entire support team, allowed the festival programme to continue as Roderick would have wanted. The quality and spirit of the shows did not suffer. It was truly remarkable to see everyone rally together to achieve something special.

The newly created third week of shows was a testing ground for a whole bunch of new ideas. The first ever

Sunday Brunch at the Fringe was a smash hit, as we sold out the venue completely. Other successes were Tendai Huchu discussing his novel *The Maestro*, *The Magistrate* and *The Mathematician*, Gillian Keith and Simon Lepper shining in their teatime performances, and the new jazz late shows, which had a fantastic atmosphere. We will be building on these strengths and creating a new programme for next year as ROSL ARTS looks to continue its brilliant run at the Fringe Festival in its 17th year.





## AN UNFORGETTABLE EXPERIENCE

Why Alexander Arai-Swale will always treasure his six-week tour of the UK as Pettman/ROSL ARTS scholars with his cello quartet QUATTRO

It is difficult to put down on paper my experience in the UK on the Pettman/ROSL ARTS scholarship programme – perhaps because it was such a magnificent cultural immersion that it has left me in a musically induced stupor. As I boarded the plane with fellow cellists Catherine Kwak, Jacky Siu and Sam Lucas, the other members of QUATTRO, and saw our four cumbersome instruments

strapped into their individual seats, I realised that we were in for an unforgettable six weeks.

Coming from New Zealand, there was nothing more soul-awakening than to explore the culture of the UK. I watched BBC Proms concerts from the Queen's Box at the Royal Albert Hall, had coaching and lessons with some of the most inspiring musicians in the world, made new friends, ate great food – and took the Tube during rush hour (the only experience I will not miss).

By mid-August, we had arrived in Edinburgh after an incredible but exhausting summer school by Lake Windermere in Cumbria. Our typically well-dressed

man-to-contact, Tait Becke, met us in a T-shirt and jeans, and helped us up the stairs with our endless piles of luggage. Roderick Lakin, the wonderful Director of ROSL ARTS, and his wife Margaret were waiting at street level. As we had all our things on the sidewalk, we decided to wait for an unoccupied taxi to come closer up the line, which annoyed the woman behind us, who insisted:

“  
Coming from NZ,  
there was nothing  
more soul-awakening  
than to explore the  
culture of the UK.”



“Why can't you take this taxi?”. Roderick shot back beautifully: “It's how the system works!”. I will treasure that moment forever – possibly the sassiest takedown I will ever see. Roderick influenced so many with his beautiful energy. His inimitable company, infinite generosity, kindness and warmth is sorely missed by countless musicians across the world. We remember him as we remember our fantastic time in the UK, with great affection and heartfelt thanks.



### *A decade of support*

The Pettman/ROSL ARTS Scholarship was formed 10 years ago after I was introduced to Barrie and Maureen Pettman, who wished actively to support young New Zealand chamber musicians with ROSL's assistance. Chamber music ensembles from NZ universities participate in a three-day selection process, including auditions, mentoring and group sessions with the adjudicators. The long weekend is designed to expose all entrants to the wide range of possibilities for post-graduate study and life as a professional musician.

The adjudicators include a prizewinning ensemble from the most recent ROSL Annual Music Competition, whose visit is funded and organised by ROSL. Their trip involves a tour of the islands and up to 12 performance opportunities in aid of charities such as Save the Children, Cancer Society, and Hearts and Hands for Haiti.

A similarly life-changing trip awaits the Pettman/ROSL ARTS scholars, who travel to London and Edinburgh for six weeks. In 2015, the cello quartet QUATTRO, from the University of Waikato, received this fully-funded experience, organised by Roderick Lakin MBE. They attended

masterclasses, performed at St Martin-in-the-Fields and the ROSL Garden Party, and went to a number of concerts.

The Pettmans have always taken a keen interest in the scholars and meet with them at the ROSL Garden Party each year.

Roderick was a focal point for NZ young musicians. His extensive contacts gave them opportunities that have assisted them in their professional careers around the world. Together with the ROSL ARTS team, we will continue to ensure that this legacy continues for future generations of NZ musicians.

**Lyn Milne, ROSL NZ Director**

# 4 HOURS

THE TIME IT TOOK THE JUDGES OF THE INAUGURAL ROSL TRAVEL AWARD TO DECIDE ON THE WINNER, FROM NINE YOUNG CANDIDATES, IN MARCH 2015.

## *Raising expectations*

How the ROSL Travel Award brought a career as an international musician a step closer for Australian viola player Jared Yapp

At the exact moment when it felt comfortable, and seemed as if the life of a travelling musician was doable, my six-week trip to the UK came to a close. It seems clear now that this was the intention of the ROSL Travel Award.

Under the expert guidance of the truly irreplaceable Roderick Lakin, every moment of my time on the scholarship in July and August was carefully tailored to suit my needs and musical ambitions. Although coordinating

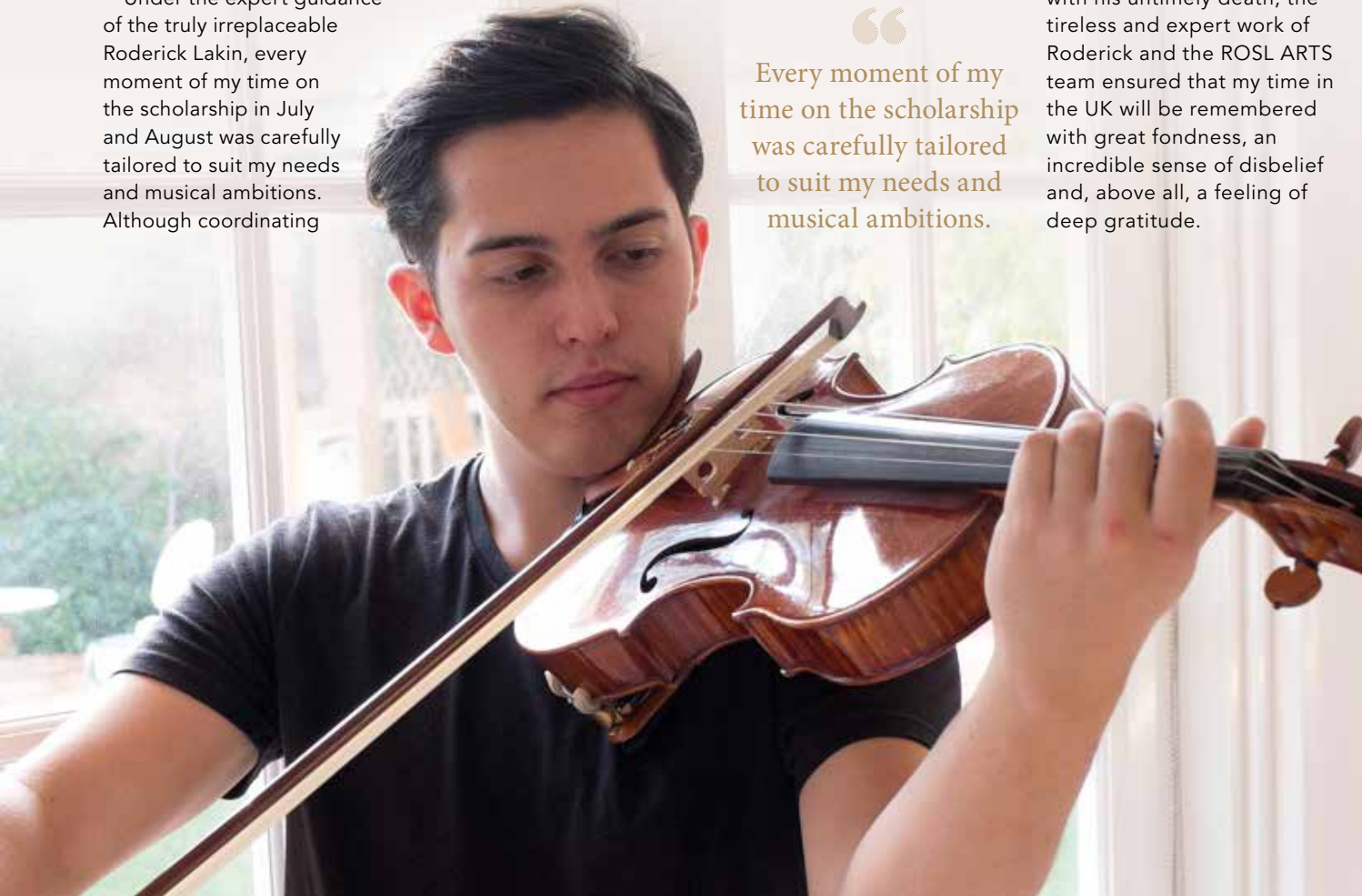
the numerous hours of expert tuition was his main focus, it was Roderick's uncanny ability to appear simultaneously disorganised and deeply competent while arranging these coaching sessions that became a lesson in arts administration – one I had not expected to learn.

As is common in life, the lessons unintentionally learnt seem to be the ones remembered most strongly and, indeed, this aptly describes my experience with ROSL. Every moment immersed in the rich cultural environment set out for me was a learning

experience, whether I realised it at the time or not, and herein lies the true value of scholarships such as these. Not only was I able to work with great musicians, learn from the best teachers, and witness outstanding performances, but I also made the crucial connections and long-lasting friendships that underpin any successful career in music – a career that now seems all the more attainable.

Although the trip ended in tragic circumstances, with his untimely death, the tireless and expert work of Roderick and the ROSL ARTS team ensured that my time in the UK will be remembered with great fondness, an incredible sense of disbelief and, above all, a feeling of deep gratitude.

“  
Every moment of my time on the scholarship was carefully tailored to suit my needs and musical ambitions.”







**B**ianca Baldi and Dineo Seshee Bopape from South Africa, and Tamara Henderson from Canada, joined ten UK-based artists to undertake a residency at Hospitalfield Arts in Arbroath in September. They will return to the UK in 2016 to develop projects with the exhibiting organisations that selected them for the scholarship.

#### **Bianca Baldi**

*Selected by AV Festival*

Bianca Baldi's installations stem from an image-making practice in which narratives are fashioned using collage, film and photography. She grew up in KwaZulu Natal and studied at the Michaelis School of Fine Art, University of Cape Town, followed by postgraduate studies at the Städelschule in Frankfurt am Main and IUAV University of Venice.

Bianca's most recent solo exhibition was Zero Latitude at Johannesburg's Goethe-Institut in 2014. Her group shows include exhibitions at Kunstverein Braunschweig in Germany, Videobrasil São Paulo in Brazil and the Berlin Biennale of Contemporary Art. She will work on a public project for the AV Festival,

the North East's international festival of contemporary visual art, film and music, in March. [www.avfestival.co.uk](http://www.avfestival.co.uk)

#### **Dineo Seshee Bopape**

*Selected by Collective Gallery*

Dineo Seshee Bopape grew up in Limpopo and Durban, where she studied painting and sculpture. A graduate of De Ateliers in Amsterdam, she completed an MFA at Columbia University, New York in 2010. She received the 2008 MTN New Contemporaries Award and 2010 Columbia University Toby Fund Award.

Dineo has shown her work in major exhibitions worldwide, most recently at the Hayward Gallery, London. As part of the ROSL ARTS/Hospitalfield Arts Scholarship, she will work with Collective Gallery

in Edinburgh to deliver an exhibition in 2016. [www.collectivegallery.net](http://www.collectivegallery.net)

#### **Tamara Henderson**

*Selected by Glasgow International*

Tamara Henderson lives and works between Stockholm and Vancouver, and studied at NSCAD, Städelschule and the Royal Institute of Art in Stockholm. She often works collaboratively and recently exhibited in the two-person show 'Sans Tête au Monde' at Kunsthall Stavanger, Norway, and at A1C Gallery in St John's.

She had a solo exhibition at Rodeo, London, and in 2013 was shortlisted for the Sobey Art Award. In 2016, Tamara will return to the UK with a solo exhibition in the biennial festival Glasgow International. [glasgowinternational.org](http://glasgowinternational.org)





3. **Design:** Julie Favreau works on her video installation 'She Century' at Hospitalfield.

4. **Puzzle pieces:** Favreau's pavilion, part of 'She Century'. 5. **Installation:** A gallery visitor views 'She Century' at Edinburgh Art Festival 2015.

## The Improbable City

The title of Edinburgh Art Festival's 2015 commissions programme comes from Italo Calvino's seminal work *Invisible Cities*, in which a fictional Marco Polo describes the many fantastical cities he has visited to an incredulous Kublai Khan. According to the organisers, the programme celebrates artists who vividly conjure alternative worlds, whether utopian, dystopian, anarchic or romantic.

© Ruth Clarke



# IMPROBABLE SUCCESS

Sorcha Carey considers ROSL Visual Arts Scholar Julie Favreau's exciting new installation for Edinburgh Art Festival

Edinburgh Art Festival is the youngest of the city's summer festivals. Each year, we work in partnership with galleries and pop-up venues across the city to bring together more than 40 exhibitions by leading and emerging artists from the UK and beyond, alongside newly commissioned artworks and special events.

Last year, we were invited to work with Hospitalfield Arts and ROSL ARTS on their visual arts scholarship programme, with a view to showcasing a project by the selected artist in the 2015 festival. Our programme for 2014 had included 'Where Do I End and You Begin', a major group exhibition featuring 23 artists selected by five curators from across the Commonwealth.

The project had depended on a strong network of international partners.

It was through these partnerships and, in particular, Marc Lanctot, Curator at the Musée d'Art Contemporain de Montréal, that we offered Quebecois artist Julie Favreau a residency at Hospitalfield House, where she could begin working on a new work for the festival's commissions programme the following year.

The highly immersive quality of Favreau's previous work – film installations peopled with enigmatic figures often engaged in highly charged encounters with objects – made her a natural candidate for inclusion, as the theme for the commissions programme this year was 'The Improbable City'. This brought together

the work of seven artists, who each offered an encounter with worlds or spaces at the limits of the probable.

Favreau began filming her new project while in residence at Hospitalfield, near Arbroath; and while the resulting work was in no way intended as a literal representation of Hospitalfield, it was strongly influenced by the artist's personal experience of and response to the unique context of the house.

In tune with previous work, Favreau used an object as her starting point. 'She Century' has, at its core, an elastic rope wielded by a lone female figure – part hunter, part magician – in a carefully choreographed series of gestures captured in two distinct film pieces. A series of delicately crafted sculptural elements echo the architectural forms referenced in the main character's actions, creating a mysterious and uncanny environment.

The exhibition, which is at the Scottish National Gallery of Modern Art until 10 January 2016, presents Favreau's work to UK audiences for the very first time.

*Sorcha Carey is Director of Edinburgh Art Festival.*

“  
The highly  
immersive quality of  
Favreau's previous  
work made her a  
natural candidate.

## Where you are

### ROSL NEWS

1. **In the sun:** The Bournemouth Branch's annual garden party. 2. **Charity work:** Maurice Powell and Donald Ruffell with a Taunton Branch cheque for VSO. 3. **Celebration:** Victorian Branch members John Short (Vice President/Treasurer), Julie Sattler OAM (Assistant Treasurer) and Jason Ronald OAM (Chairman) with the Dean of Melbourne, The Very

Revd Dr Andreas Loewe, at a special Evensong at St Paul's Cathedral. 4. **Military heritage:** South Australia Branch members enjoy a trip to the Army Museum of South Australia. 5. **Popular trip:** Members of ROSL West on a visit to the London clubhouse. 6. **Making connections:** Robert Dick and Sylvia Sheedy at a Tasmania Branch lunch.



#### AUSTRALIA

##### South Australia

###### Christmas dinner

Tuesday 1 December,  
6pm, Public Schools Club,  
East Terrace, Adelaide

Two-course festive dinner with  
a talk by Rev Peter Balabanski  
on 'Where Christmas Began'.

To attend, email [rosl.sa@mac.com](mailto:rosl.sa@mac.com).  
Guests welcome. \$35.

##### Tasmania

###### Christmas lunch

Tuesday 8 December, time tba,  
Derwent Sailing Squadron,  
Sandy Bay, Hobarth

Two-course festive lunch at this  
relaxing waterfront location.

To attend, call +61 (0)3 6223  
3763 or +61 (0)3 6249 5859.  
Guests welcome.

## ROSL BRANCHES

Our branches provide an opportunity for members in all parts of the world and across the UK to enjoy a range of social events close to home. To find out more about getting involved, simply contact your local representative.

### A new partnership

#### THE BOURNEMOUTH AND TASMANIA BRANCHES LINK UP

The Tasmania-Bournemouth Branch initiative evolved from a desire to address Tasmania's relative isolation from ROSL headquarters and other branches. In December 2014, the Director-General proposed a twinning programme, which both branches agreed to with alacrity. The main objective is to create and build on social and cultural links between these two branches with differing cultural backgrounds.

The Bournemouth Branch has a large membership of more than 100 members, and a varied programme of lunches and events, including an annual garden party. I took over as Secretary from Marjory Harvey, who had been in the role for 25 years, in 2008. Stephen Jones is my opposite number in Tasmania. Since the initiative began, we have received a visit from a Tasmania Branch member, and exchanged

Powerpoint presentations, newspaper articles and books about our branches and local areas. In future, we hope to entertain more Tasmanian members, exchange our programmes and events, and increase our awareness of life in Tasmania.

The Bournemouth Branch is also forging closer links with the Salisbury and South Wilts Branch of ROSL's sister organisation, the English Speaking Union, as one of our members, Terence Dear, recently became Secretary of the Salisbury Branch.

*Gordon Irving*

© Stephen Jones



## 63-YEAR REIGN

THE RT REV DR PETER HOLLINGWORTH, FORMER GOVERNOR GENERAL, WAS GUEST SPEAKER AS THE VICTORIAN BRANCH CELEBRATED THE QUEEN BECOMING THE LONGEST-REIGNING MONARCH.

### Victoria

#### Christmas reception

Thursday 10 December,  
6pm, Toorak, Melbourne  
Cocktail reception at the residence of the British Consul General in Melbourne.

To attend, call  
+61 (0)3 9654 8338.

#### Theatre night

Thursday 28 January,  
Her Majesty's Theatre, Melbourne  
An opportunity to see the Seekers musical, Georgy Girl.

To attend, call  
+61 (0)3 9654 8338.

### NEW ZEALAND

For further details and event listings, see [www.roslnz.org.nz](http://www.roslnz.org.nz) or contact [royalo-s@xtra.co.nz](mailto:royalo-s@xtra.co.nz). Members and guests welcome.

### Southland

#### Christmas lunch

Wednesday 2 December,  
12pm, The Braemar, Herbert Street, Invercargill  
Christmas lunch with music and readings.

### Christchurch

#### Christmas lunch

Wednesday 2 December,  
12pm, Chateau on the Park  
Festive three-course lunch.

### South Canterbury

#### Christmas dinner

Wednesday 9 December,  
6pm, Seven Oaks, Timaru  
Festive meal with entertainment.

### UNITED KINGDOM

### Bath

#### Monthly coffee morning

Wednesday 9 December,  
13 January, 10 February,  
9 March, 10.30am, Pratt's Hotel,  
South Parade, BA2 4AB  
Friendly meeting every second Wednesday of the month.  
Guests and potential members welcome. Free (pay for own refreshments).

#### London weekend

Friday 1 - Monday 4 April  
For details, see 'ROSL West'.

### Bournemouth

For information about events in January and February, contact [westoverirving@aol.com](mailto:westoverirving@aol.com).

#### Weekly coffee morning

Thursday 3, 17 December;  
7, 14, 21, 28 January; 4, 11, 18, 25 February; 3, 10, 17, 24, 31 March,  
10.30am, Marriott Highcliff Hotel  
These regular meet-ups remain an important part of the branch's events calendar.  
Guests and ESU members welcome. £3.

#### Christmas lunch and raffle

Wednesday 9 December, 12.30pm,  
Marriott Highcliff Hotel  
Two-course dinner with coffee, followed by a raffle. Proceeds will be donated to a local hospice.  
For details, call  
+44 (0)1258 480887. £24.

#### London weekend

Friday 1 - Monday 4 April  
For details, see 'ROSL West'.

### Cheltenham

From 2016, events will be held on a quarterly basis.

#### Christmas lunch

Wednesday 16 December,  
12pm, Matchams Restaurant,  
Everyman Theatre  
Delicious festive meal.  
Guests welcome. Two courses 15.50; three courses £18.50.

#### Commonwealth Day lunch

Monday 14 March, 12pm,  
Matchams Restaurant,  
Everyman Theatre  
Choose from a two- or three-course set menu at this popular bar attached to the theatre.  
To book, call +44 (0)1242 515540. Guests welcome.  
Price tba.

### Edinburgh

#### The Royal Mile

Saturday 9 January, 10am,  
Over-Seas House Edinburgh  
Coffee morning with a talk by Eric Melvin on this famous thoroughfare, running from Edinburgh Castle to the Palace of Holyroodhouse.  
£3.

#### Coffee morning

Saturday 6 February, 10am,  
Over-Seas House Edinburgh  
With a talk by Jackie Sutherland. Subject tba.  
£3.

#### Coffee morning

Saturday 5 March, 10am,  
Over-Seas House Edinburgh  
Speaker and subject tba.  
£3.

### Exeter

Please note that there is no lunch in December and the event originally scheduled for 29 January has been postponed until 27 May, as the venue is being renovated.

#### Lecture and lunch

Friday 26 February, 11.30,  
City Gate Hotel, EX4 3RB  
One-course lunch and talk. This event may be postponed until Friday 24 June due to building renovations.  
For details, contact [roslnwest@gmail.com](mailto:roslnwest@gmail.com).

#### 'ROSL overseas branches'

Friday 18 March, 11.30,  
City Gate Hotel, EX4 3RB  
Talk by ROSL Director-General Roddy Porter followed by lunch.  
Guests and potential members welcome.

#### London weekend

Friday 1 - Monday 4 April  
See 'ROSL West' for details.

#### AGM

Friday 29 April, 11.30,  
City Gate Hotel, EX4 3RB  
Formal meeting followed by lunch.  
Members only.





## Where you are

ROSL NEWS

## CONVICT ART

HOW IS THE HERITAGE AND CULTURE OF BRITISH CONVICTS, TRANSPORTED TO THE COLONIES BETWEEN 1780 AND 1850, CELEBRATED AND REPRESENTED AROUND THE WORLD? (SEE WEST CORNWALL).

### Glasgow

For information about events in January and February, call +44 (0)141 884 6342.

#### Christmas lunch

*Friday 11 December, 12.30pm, The Western Club*  
Three-course festive lunch including wine and coffee, with guests of honour ROSL Chairman Simon Ward and Raye Ward.  
**To book, call +44 (0)141 884 6342. Guests welcome. £30.**

### ROSL West

#### London weekend

*Friday 1 - Monday 4 April, Over-Seas House London*  
Enjoy a long weekend at the clubhouse, with the opportunity to see a West End play and visit places of interest, including the Courtauld Gallery and Ham House. For Bath, Bournemouth, Exeter and Taunton Branch members only. Includes half-board; excludes outings and travel to/from London.

**To register your interest, contact [rosl.west@gmail.com](mailto:rosl.west@gmail.com) or +44 (0)1823 661148. Price tba.**

### Taunton

#### Weekly coffee morning

*Wednesday 9, 16 December; 6, 13, 20, 27 January; 10, 17, 24 February, 10.30am, Miles at The Riverside*  
Friendly informal gathering.  
**Guests and potential members welcome. Free (pay for own refreshments).**

#### 'Order, Order!'

*Wednesday 2 December, 11.30am, Somerset College*  
Talk by George Jones,

former Political Editor of *The Daily Telegraph*, followed by a two-course lunch.  
**Members only. £19.**

#### 'Making a difference: The humanitarian work of ROSL'

*Wednesday 3 February, 11.30am, Somerset College*  
Illustrated talk by Margaret Adrian-Vallance, Director of ROSL Humanitarian and Education projects, with two-course lunch.  
**Guests welcome. £15.**

#### 'Routes to the River Tone'

*Wednesday 2 March, 11.30am, Somerset College*  
Illustrated talk by Nick Tomlinson of Somerset Wildlife Trust, with a two-course lunch.  
**Guests welcome. £15.**

#### London weekend

*Friday 1 - Monday 4 April*  
See 'ROSL West' for details.

### West Cornwall

#### 'Tales of Kenya'

*Thursday 17 December, 2.45pm, Carbis Bay Hotel*  
Talk by Bob and Sue Harrison followed by Cornish cream tea.  
**To attend, call +44 (0)1736 333460 by 15 December. Guests welcome. £6.**

#### 'Convict art'

*Thursday 28 January, 2.45pm, Carbis Bay Hotel*  
Talk by Louise Connell, Director of Penlee House Gallery and Museum, followed by Cornish cream tea.  
**To attend, call +44 (0)1736 333460 by 26 January. Guests welcome. £6.**

#### 'Ghana, Togo and Benin'

*Thursday 18 February, 2.45pm, Carbis Bay Hotel*  
Film and talk by local filmmaker John Potter, followed by Cornish cream tea.  
**To attend, call +44 (0)1736 333460 by 16 February. Guests welcome. £6.**

#### Annual lunch

*Thursday 17 March, 12.30pm, Carbis Bay Hotel*  
With guest of honour ROSL Chairman Simon Ward.  
**For details, call +44 (0)1736 333460. Guests welcome.**

### West Sussex

#### Christmas lunch

*Wednesday 2 December, 12.30pm, Windsor Hotel, Worthing*  
Three-course lunch and fundraising raffle.  
**For details, call +44 (0)1444 458 853. £24; guests £25.**

#### AGM and lunch

*Wednesday 9 March, 12.30pm, Windsor Hotel, Worthing*  
Two-course lunch attended by Director-General Roddy Porter, followed by the AGM.  
**For details, call +44 (0)1444 458 853. £19; guests £20.**

## CONTACTS

**Alberta:** Cynthia Cordery  
[ccordery@shaw.ca](mailto:ccordery@shaw.ca)  
+1 780 477 0001

**Bath, Exeter and ROSL West:** Sally Roberts  
[rosl.west@gmail.com](mailto:rosl.west@gmail.com)  
+44 (0)1823 661148

**Bournemouth:** Gordon Irving  
[westoverirving@aol.com](mailto:westoverirving@aol.com)  
+44 (0)1258 480887

**British Columbia:** Liz Murray  
[evmurray@telus.net](mailto:evmurray@telus.net)  
+1 604 922 1564

**Cheltenham:** Barbara Snell  
+44 (0)1452 813373

**Edinburgh:** Mae Barr  
[maebarr@tiscali.co.uk](mailto:maebarr@tiscali.co.uk)  
+44 (0)131 334 3005

**Glasgow:** Bill Agnew  
+44 (0)141 884 6342

**New South Wales:** Lily Murray  
[murraylily@hotmail.com](mailto:murraylily@hotmail.com)

**New Zealand:** Lyn Milne  
[www.roslnz.org.nz](http://www.roslnz.org.nz)  
[royalo-s@xtra.co.nz](mailto:royalo-s@xtra.co.nz)

**Nova Scotia:** Liz Stern  
[lizstern317@gmail.com](mailto:lizstern317@gmail.com)  
+1 902 678 1975

**Ontario:** Ishrani Jaikaran  
[www.rosl-ontario-canada.ca](http://www.rosl-ontario-canada.ca)  
[rosl.ont@sympatico.ca](mailto:rosl.ont@sympatico.ca)  
+1 416 760 0309

**Queensland:** Sharon Morgan  
[sllmorgan@hotmail.com](mailto:sllmorgan@hotmail.com)  
**South Australia:** Michael Kent  
[rosl.sa@mac.com](mailto:rosl.sa@mac.com)

**Switzerland:** Jo Brown  
+334 5040 6631

**Tasmania:** Robert Dick  
[gradick1@gmail.com](mailto:gradick1@gmail.com)

**Taunton:** Neil Milne  
[rosl.taunton@gmail.com](mailto:rosl.taunton@gmail.com)  
+44 (0)1823 286732

**Thailand:** Anna Bunya-Ananta  
[www.roslthailand.com](http://www.roslthailand.com)  
[annabunya@gmail.com](mailto:annabunya@gmail.com)

**Victoria:** Jason Ronald  
[www.rosl.org.au](http://www.rosl.org.au)  
[rosl@alphalink.com.au](mailto:rosl@alphalink.com.au)  
+61 (0)3 9654 8338

**West Cornwall:** Ian Wood  
+44 (0)1736 333460

**West Sussex:** Marilyn Archbold  
+44 (0)1444 458853

**Western Australia:** Anthony Abbott  
[losabbotts@hotmail.com](mailto:losabbotts@hotmail.com)  
+61 (0)8 9368 0379

# EJ VERDI

## SOPHISTICATED WOMENSWEAR



**WWW.EJVERDI.COM**

**FOR A FREE CATALOGUE CALL 0191 265 4372**



## A DIFFERENT KIND OF MEMBERS' CLUB

The Royal Over-Seas League is a unique, not-for-profit, private membership organisation that encourages international friendship and understanding through arts, social, music and humanitarian programmes. With membership benefits including accommodation and dining at clubhouses in London and Edinburgh, and reciprocal arrangements with over 80 clubs around the world, we offer our members a home away from home.

### HOW TO JOIN

Call +44 (0)20 7408 0214 (ext. 214 & 216) and quote 'OVERSEAS' for special joining discounts, visit [www.rosl.org.uk](http://www.rosl.org.uk) or email [info@rosl.org.uk](mailto:info@rosl.org.uk)



Life beyond sight loss  
St Dunstan's since 1915



## Hear the Gift of Christmas

Blind Veterans UK Carol Concert

St Marylebone Parish Church  
Wednesday 9 December 2015

Music will be provided by Philsavonia – the Savage Club Brass Ensemble with lots more wonderful music and readings throughout the service.

**Concert tickets are £15**  
(includes a £10 voluntary donation)

**Doors open at 7pm**



To buy tickets online please visit  
[www.blindveterans.org.uk/carolconcert](http://www.blindveterans.org.uk/carolconcert)  
or call us on 020 7616 7959



## Special Member Offer

ROSL Conference and Banqueting celebrate the centenary of *Overseas*

**To celebrate the 100 year anniversary of *Overseas*, we are offering our members £100 off function room hire at the clubhouse in December, January, February and March.**

Be it a get-together, a birthday, wedding, meeting, lunch or dinner, choose to celebrate at your clubhouse and enjoy the spectacular location and personal service of the ROSL catering team.

For more information or to book your next event, contact +44 (0) 20 7629 0406 or email [rosldining@graysonsrestaurants.com](mailto:rosldining@graysonsrestaurants.com) and quote 'Overseas Centenary' to receive this special discount.

T&Cs apply. Not valid with any other offers or discounts.







## SNAPPED READING OVERSEAS

(Left to right) ROSL member John Phillips reads *Overseas* on a visit to see the Battle of Britain Spitfires at Goodwood Aerodrome. Ian Hunt enjoys a spot of light reading while skiing in Canterbury, New Zealand. Tim Handley braves the heavy rain to pose outside the glorious Shwedagon Pagoda in Yangon, Burma with his copy. Send in your 'snapped reading' pictures to [editor@rosl.org.uk](mailto:editor@rosl.org.uk).



## GADET IN THE GARDEN

Members enjoyed a glass of bubbly or four when our partners, Château Gadet, hosted a champagne tasting in the Garden. While savouring a fine selection, members learnt more about the family-run Maison Gadet, before heading to the Restaurant for a post-tasting menu.

## WATERLOO BATTLEFIELD TOUR

The 2015 battlefield tour to the 'cockpit of Europe', ably led by historian Michael Orr, focused on the Battle of Waterloo in its anniversary year, but included Oudenarde, where Marlborough's allied army defeated that of Louis XIV; and Mons, the first WWI British engagement, poignantly remembered in the cemetery of St Symphorien. According to ROSL member Ken Giles, "The highlight was Waterloo: the fascinating visitors' centre, the Lion Mount memorial with its panoramic view, and the never-to-be-forgotten engagements of La Haye Sainte, Hougomont, Placenoit and La Belle Alliance." Join the next ROSL Battlefield tour to Gallipoli on 23-28 May 2016. Contact [membersevents@rosl.org.uk](mailto:membersevents@rosl.org.uk) for details.



## 'CONDUCTORS UNBECOMING'

Gavin Henderson, Chair of Adjudicators for the ROSL Annual Music Competition, held his audience captive with a witty and engaging talk about his career. From his time as an orchestral trumpeter on the Pier at Worthing to his current role as the Principal of the Royal Central School of Speech and Drama, he shared his extensive experience of the music world.



## CHAMPAGNE WITH FRIENDS

Friends of ROSL ARTS enjoyed an evening of pleasant company and great music at the ROSL ARTS Garden Party in July. A champagne reception in the sunshine was followed by a concert in Princess Alexandra Hall, where Friends had the opportunity to hear Pettman/ROSL ARTS scholars QUATTRO perform pieces by Mozart and Piazzolla.



For all  
upcoming  
events see  
**PAGE 38**



## Gift of membership

### INTERESTED IN TREATING A LOVED ONE TO ROSL MEMBERSHIP? (SEE PAGE 19 FOR DETAILS).

#### GETTING QUIZZICAL

ROSL's quiz  
regulars  
Consistently  
Inconsistent



(Greg Miles, Clara, Colin and Henrietta Swan, and Oliver Facer-Harrison) fended off strong competition from several newcomers to win the first prize at the July quiz. We took a break over the August summer holiday but returned sharp-minded in September, when the Short Planks, a mixed team of previous winners and first-timers who were introduced on the night, pooled their knowledge and walked away victorious. Why not join us for our next quiz on 15 December? See page 40 for details.



#### ISLE OF MAN CONCERT

The Lieutenant Governor of the Isle of Man, Adam Wood, hosted an evening reception for Manx ROSL members on 8 September. Government House provided a splendid location for members to meet ROSL Chairman Simon Ward and his wife Raye, before hearing a recital from the exceptional Cavaleri Quartet. The programme included 'Andante cantabile' from Tchaikovsky's *String Quartet no.1* as a dedication to Roderick Lakin. Thanks goes to John Bethell of the Erin Arts Centre, who helped coordinate this event.



#### ROSL'S GRAPE ESCAPE

The wine tour of Burgundy in September was a great success, as ROSL member Jill Courtneil recalls: "We assembled in the Eurostar Departure Lounge under the wing of Roddy Porter – a group of nine who soon became friends under the influence of the wines we appreciated. Our first tasting experience was at Olivier Leflaive, where we had a tour of the winery and a lip-smacking lunch, complemented by their beautiful white burgundies. We then visited Bouchard Aîné, whose approach to tasting concentrated on detecting scents, flavours and textures.

Friday was our free day so several of us took the train to Dijon. Our evening was crowned with a gala dinner at the

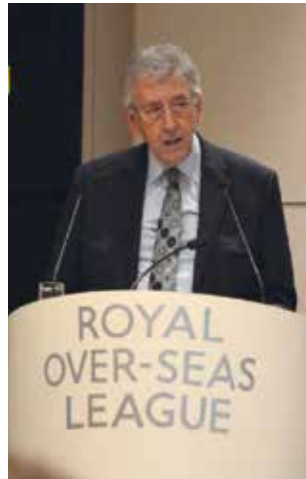
Michelin-starred Le Benaton restaurant that was magnifique.

On our final day we travelled to Comte Senard Chateau in Aloxe-Corton, emerging from their ancient cellars ready for our tasting lunch in the rustic dining room. We returned to Beaune to work off our indulgences with a two-hour walking tour around the city walls, pledging to join the next ROSL wine tour, as our experiences had been so enjoyable."



#### TEA BY THE THAMES

In July, Lord Luce hosted an afternoon tea at the Palace of Westminster. Members were formally introduced to the ROSL President, his wife Lady Luce and Director-General Roddy Porter by toastmaster Barry Dorn, before proceeding into the sunny riverside Cholmondeley Room for generous helpings of sandwiches, cakes and scones.



Special Envoy for Women and Children in Belize; Tina Taylor, former CIO of General Electric and Founder of the Heritage Leadership Academy, South Africa; Deborah Leary OBE, Chair of the Commonwealth Businesswomen's Network; and Jude Kelly CBE, Artistic Director of the Southbank Centre and creator of the Women of the World Festival. Many High Commissioners were also in attendance.

The discussion explored how CHOGM and the Commonwealth can tackle issues of gender inequality and touched on core issues, such as gender-based violence and women's education. The panel strongly advocated that the Commonwealth should act as a fundamental and powerful force in tackling issues of gender equality worldwide.

### ADDING GLOBAL VALUE

ROSL and the Royal Commonwealth Society (RCS) collaborated on a high-profile panel discussion focusing on the newly founded CHOGM (Commonwealth Heads of Government Meeting) Women's Forum. We were delighted to welcome RCS

president, the Rt Hon the Lord Howell of Guildford, who introduced the evening before handing over to our excellent chair, Catherine Mayer, Founder of the Women's Equality Party.

Our distinguished panel included Kim Simplis Barrow, the First Lady of Belize and



### THE MIDWIFE'S SISTER

At her book event in September, sculptor and writer Christine Lee spoke movingly about her relationship with her sister Jennifer, author of *Call the Midwife*. During the Q&A-style discussion, led by Director-General Roddy Porter, she read descriptive passages from her book, shared photographs and recounted stories about the joys and hardships that had brought them together and driven them apart. The talk was followed by a wine reception and book signing.

### FROM ROTHERHITHE TO THE ROYAL MEWS

From Rotherhithe shipyards to royal stables, members explored both the industrial and the regal aspects of London history on our 'Mariners, movies and Mayflower' walking tour in August (bottom right). Uncovering Rotherhithe's busy seafaring past, it offered a unique insight into an area that has retained its old village charm despite rapid redevelopment.

In September, our popular visit to the Royal Mews gave members the opportunity to see the royal family's ornate custom-made carriages, but it was the gorgeous Windsor Greys that stole the show (top right).



© Bill Barr

### EDINBURGH ARTS LUNCH

Speaker John Ramsay stepped into the breach when the scheduled speaker couldn't attend. Following his talk on 'Ancient Athens', he joined members and their guests for lunch in the clubhouse's Restaurant 100.





# STIRRED NOT SHAKEN

Malcolm Ellison joins Younger Members, and two very special guests from HM's secret service, for ROSL's theatrical James Bond Inter-Club Summer Ball

**W**hen country calls, there is only one man for the job: Bond, James Bond. Having always been a fan of the films, and having worked on some of the more recent ones, I was keen to help organise the Younger Members summer ball at ROSL, which took the famous agent as its theme.

With the stylish background of the London clubhouse, complete with a sleek Aston Martin, our man from MI6 and his female cohort swept into Park Place and the drive of Over-Seas House. Bristling with a selection of armoury, they instantly attracted a crowd of admirers.

After photo opportunities, the evening progressed with a prosecco reception in our redesigned garden – the best adjoining Green Park. A James Bond jazz trio had us foot-tapping – but we kept our eyes peeled for the bad guys all the while. With none in sight, the event moved on to dining in Princess Alexandra Hall. However, dinner was interrupted by villains firing guns, seeking Bond, capturing his companion and dispatching our YM chairman to that clubland in the sky. Our hero saved the day and with his Walther PPK, accompanied by a range of fireworks, fire cannons and, of course, Union Jack smoke

explosions – all coordinated to *Live and Let Die* – he out-manoeuvred the enemy, rescued his girl, and freed guests for dancing.

As an organiser, I was pleased to find that the advance dinner tickets sold out in under a minute – a first for ROSL YM events! And guests were not disappointed. It proved to be an evening of style and sophistication that was one of the best events in the YM 2015 calendar.

The night would not have been possible without the hard work of the extremely talented special effects team, lighting crew, DJ, Bond band, actors and, of course, the fantastic ROSL team, who organised tables, dinner and looked after our members and guests. So, with the DJ in full swing, we danced the night away, not shaken but certainly stirred.



Following a popular outing in 2014, Younger Members in Edinburgh returned to the Meadows Croquet Club for a game in July. Alexander Lamley, ROSL representative for the Scottish Clubs Group, perfects his stroke.



1. **Stunning:** Soraya Mafi performs with ROSL accompanist winner Ian Tindale in 2015. 2. **Impressive:** This year's Ensembles B section final. 3. **Anticipation:** Ferio Saxophone Quartet wait to compete.

4. **Eclectic:** The Slidin' About trombone quartet at the Ensembles B final. 5. **Applause:** Enrapt audience at the 2015 Final. 6. **Top brass:** The 2015 section final. 7. **Decisions:** The judges deliberate.



## ANNUAL MUSIC COMPETITION

# AN AUDIENCE GUIDE

Simon Lepper offers his tips on how to get the most out of the competition, and what you can learn from the talented young musicians' choice of repertoire and performance style

**T**he ROSL Annual Music Competition is a milestone for any young Commonwealth or British musician on the threshold of a career as a performer. The range of categories and sheer number of prizes is unique among music competitions. It has an excellent track record of selecting musical personalities who go on to have international careers and become household names in the classical world. Some of the illustrious former prizewinners include pianists John Lill, Barry Douglas,

Geoffrey Parsons and Paul Lewis, soprano Susan Bullock, and cellist Jacqueline du Pré.

So how is it that the competition has the knack of selecting musicians who so frequently go on to become international personalities? Perhaps it is the amount and breadth of repertoire that the competitors have to present. There is nowhere to hide in the three rounds that any musician must pass through to get to the Final. They must fulfil the requirement of performing not only standard core repertoire but also

music from before 1830 and after 1970. The programme choices can often signal to an adjudicator, even before a sound is made, what kind of performer they might be. Those competitors who have been most successful often

choose a mixture of repertoire that shows everything from the ability to play a simple 'tune' to virtuoso fireworks.

For the competitor, each round will require a different approach. The audition round is the most important, with only 10 minutes to catch the attention of the judges. First impressions are everything but they mustn't play all their musical cards at once. They have to show new sides to their musical personality in the 15-minute quarter-final.

Then, having judged them on their technique and

“

**There is nowhere to hide in the three rounds that any musician must pass through to get to the Final.**

# Cadogan Hall

THIS YEAR'S COMPETITION VENUE, AFTER NEARLY 40 YEARS AT QUEEN ELIZABETH HALL.

Images © James McCormick



2



3



4



5



6



7

repertoire choice in the earlier rounds, it is in the semi final that the adjudicators can really see their potential as a performer. This is the moment when, for the first time, the musician has the opportunity to engage with the public. Can they hold our attention in what amounts to a mini-recital?

Do we want to hear more? The choice of repertoire and stage manner is crucial in winning over the audiences in the intimate setting of Princess Alexandra Hall.

But everything can change at the Final, which in 2016 will be held at Cadogan Hall in Chelsea for the first time. It is intriguing to see how a musician you have heard up close in the earlier rounds responds to a much larger stage and auditorium. Do they choose to play safe and repeat repertoire from earlier rounds

or will they show even greater depths to their musicianship? One thing is certain; it is the unique combination of technique, sound quality, interpretative ability and personality that we are looking for in a prizewinner.

## THE PERFECT COMBINATION

The two ensemble prizes are chosen earlier in the proceedings. This category is fascinating not least because of the combination of instruments, which can include anything from a piano trio to more unusual combinations of recorder, saxophone or even trombone quartets.

It is also an opportunity to hear less familiar repertoire with the added interest of seeing how the performers interact, not only with the audience but also among themselves. Communication

First impressions are everything but they mustn't play all their musical cards at once. They have to show new sides.

”

between players, both on and off stage, is key to their success. As with the other instrumental categories, the ensembles include a mixture of musicians from around the Commonwealth. Perhaps it is through the ensemble prizes that we can most clearly see ROSL's commitment to fostering international friendship and understanding through the arts.

So, as another competition appears on the horizon, we can look forward to meeting

the next generation of young performers and watching them develop as the rounds progress. Maybe you'll hear them again at the ROSL Edinburgh Fringe concerts, at Wigmore Hall or giving ROSL concerts in New Zealand. Wherever you hear them next, you can always say you met them first at the ROSL Annual Music Competition.

Section final season tickets now available: see page 42 for details. For competition dates, see pages 42-45. Follow us @ros1910 for live tweets throughout the finals.

*Simon Lepper coordinates the piano accompaniment course at the Royal College of Music, where he is also professor. He is a former ROSL prizewinner and AMC adjudicator. [www.simonlepper.com](http://www.simonlepper.com)*



# 100 years of communication

ROSL President Lord Luce considers the scope and achievements of *Overseas* as we celebrate its centenary

**I**t is a great achievement for the Royal Over-Seas League that we are able to celebrate the centenary of *Overseas*, and I congratulate Miranda Moore and her team on their decision to mark the occasion with a centenary section in this issue.

Sir Evelyn Wrench, our Founder, was one of the most farsighted internationalists and communicators of his generation. As an experienced journalist, he grasped the opportunity to launch this magazine, in December 1915, to become the 'shop window' of the aspirations of the club, founded five years earlier. The basic aim was "supporting the Commonwealth

through its own social, music, art and welfare activities". Sir Evelyn continued to edit the journal until the Second World War. His ambition was to create an imperial society of a million members and to circulate the magazine as widely as possible.

We can read, in this edition, about how the magazine changed in style and length over the years. At one stage it reached 100 pages. It was highly personalised under Sir Evelyn's editorship but was adapted substantially by succeeding editors. I am intrigued that one of my former parliamentary colleagues, Tom Iremonger MP, was Editor for many years. Early

“  
Wrench grasped the opportunity to launch this magazine to become a 'shop window' of the aspirations of the club

contributors include G B Shaw, A A Milne, members of the Royal family, former Prime Ministers and notably for me, in 1956, Alan Lennox-Boyd, then Secretary of State for the Colonies, who taught me so much about politics and the Commonwealth.

Sir Evelyn's farsighted aspiration was to see an imperial federation of autonomous states, free and equal, non-racist and democratic. If he was alive today he would see that modern technology and the opportunity for networking gives an exciting chance to intensify personal communication within and between our 53 countries across the globe. The challenge is now for *Overseas* to generate increased ROSL membership and become the major Commonwealth-wide journal.





# SPREADING THE WORD

Samantha Whitaker explores Sir Evelyn Wrench's talent and vision as editor and journalist, from *Overseas* to *The Spectator*

**H**aving established his visionary Over-Seas Club in 1910 and undertaken a gruelling world tour to drum up support for it, Sir Evelyn Wrench returned with a determination to start a regular magazine to communicate with the club's new members.

He had recently resigned from his newspaper posts after eight years working for the press baron Lord Northcliffe in various roles, including as Editor of *The Overseas Daily Mail*. This journalistic training proved invaluable, and in December 1915 Wrench published the first edition of *Overseas* with financial backing from an American friend, Alexander Smith Cochran, who he described as the 'fairy godfather' of the club.

By 1922, the magazine was reaching thousands of subscribers around the world, and Wrench started to look for another channel through which to communicate his ideas. He began contributing to *The Spectator*, an intellectual weekly magazine that was then, as it is now, packed with newsbites and thought-provoking, often highly opinionated editorial, as well as literary and cultural reviews. Just a year later, he took over the business side of *The Spectator*, and in 1925 became Editor, buying a controlling interest from John St Loe Strachey, who had been at the helm for an impressive 38 years. The circulation leapt to 21,500 and the magazine was soon seen as one of London's leading weeklies.

Like *Overseas* and *Landmark*, the English-Speaking Union's newsletter, which he also edited, *The Spectator* displayed Wrench's light, readable but also serious editorial style. His articles covered topics including politics at home and overseas, travel writings and general philosophy – much like his lengthy 'Monthly Letter' in *Overseas*.

Ever the enterpriser, he didn't miss the opportunity to cross-promote his publications and an issue of *Overseas* from 1930 states: "*The Spectator* expresses its news and views in a manner as easy and pleasant as that of a clever man at his Club. The aim is to insure readers against missing the true bearing of any event, and it is especially useful to busy men and women who have no time to read the daily press, but who feel that today a knowledge of affairs is essential... There is no



1. Sir Evelyn: Pictured in the 21st anniversary issue of *Overseas* in August 1931.  
2. Promotion: An advertisement for *The Spectator* in the same edition.  
3. Far-reaching: Sir Evelyn and Lady Wrench at ROSL's Montreal office in 1930.

paper in the English language which is so widely read."

As Editor of *The Spectator*, Wrench campaigned notably for constitutional reform in India and for a solution to the 'German problem' prior to WWII, but one of his most remembered achievements was an appeal to readers to 'adopt' the mining town of Aberdare in South Wales, one of the worst hit by the Great Depression in 1929. Within three months, the magazine had raised more than £12,000 (about £700,000 today), and in gratitude the town presented Wrench with a statuette of an Aberdare miner, which still sits in *The Spectator*'s Westminster office today.

In October 1932, Wilson Harris took over as Editor and, seven years later, Wrench reluctantly gave up the editorship of *Overseas* due to the war. Although he sold his controlling share in *The Spectator* to Ian Gilmour in 1954, he remained a regular contributor and chair of the board of management until his death in 1966. Samantha Whitaker is Deputy Editor at Sunday and a former Deputy Editor of *Overseas*.



# OVERSEAS *through the ages*

Christine Wilde looks back through the archives to explore some of the themes that have defined 'our little journal' over 100 successful years

**I**n future the Over-Seas Club will issue its own monthly magazine... so that members and branches may be able to keep in even closer touch with Headquarters" began Evelyn Wrench in the first edition of *Overseas*. More than 700 issues later, the magazine remains ROSL's primary means of keeping in touch with our members around the world. During its lifetime, *Overseas* has seen two world wars, four British monarchs, the fall of the British Empire and the emergence of the Commonwealth, all the while reporting on the club's charitable and arts-based accomplishments, as well as member activities.

A lot has changed since Wrench launched his 'pocket-sized' publication. However, while successive editors have adapted the journal to their times, they have ensured that it has stayed true to the values of the club it serves. These values are reflected in the

reoccurring themes that have preoccupied its pages: social history; women; arts, music and humanitarian projects; royalty; and the Commonwealth.

## Royalty

The fundraising efforts during WWI brought the club to the attention of King George V, who became our first royal Patron in 1916. Through its entire existence, *Overseas* has documented the club's relationship with the royal family, including Lord Mountbatten, Grand President of ROSL until 1979, and the current Vice-Patron, HRH Princess Alexandra, as shown by the following extract and the images above.

## MY MONTHLY LETTER

March 1916

*HM Queen Alexandra, who takes such an active interest in the Club, has very graciously sent us a message*

of appreciation.... "I thank the members of the Over-Seas Club most sincerely for the wonderful generosity they have shown in contributing not only to my Field Force Fund but to everything that is needed by our troops at the front. It is impossible to value their patriotism too highly, and it is made all the more noticeable, as the members who have contributed to these gifts are scattered all over the world."

**DEC 1915**  
First edition, launched under Evelyn Wrench's editorship, with his 'Monthly Letter' and an iconic cover design by Macdonald Gill.

**MAR 1917**  
Introduction of a new section, 'From a Woman's Standpoint', to ensure *Overseas* would "cater for every section of our vast membership".

**JUN 1917**  
F A McKenzie is listed as Acting Editor, although Wrench credits his Secretary, Hertha Chesshire, with "piloting the good ship" until his return from military service in 1919.

**AUG 1918**  
An 'Anniversary of War' special – one of several themed issues – includes contributions from prominent people from across the world, including Field-Marshal Sir Douglas Haig, Rudyard Kipling and A A Milne.



1. A royal visit: June 1990 issue celebrates the visit of The Queen and The Duke of Edinburgh to Over-Seas House.
2. Princess Alexandra: In May 1957, HRH becomes patron of the Twentieth Century Group.
3. From the King: HM sends a contribution to ROSL's war effort in 1939.
4. Tribute: Lord Mountbatten is remembered in 1979.
5. & 7. 'Women at work': Images from December 1918.
6. Day in the life: Revelations from a female doctor in Nigeria in 1958.



## Women

Since its foundation, ROSL has been open to men and women on equal terms. Wrench was keen to ensure that this was reflected in the journal, introducing the popular 'From a Woman's Standpoint' feature that ran from 1917 to 1950, publishing articles written by women from all over the world. Women also formed a central part of the editorial team from the outset. While Wrench was absent on military duty in 1917-18, his secretary, Hertha Chesshire, became Acting Editor under F A MacKenzie. In his memoirs, Wrench describes her as "one of the most capable women journalists I have ever met".

### THE WOMEN OF INDIA AND THEIR PART IN THE FUTURE

September 1918

*The women of India have always been a great power in their land. In the golden age*

*of India's history, when her women were in prominent position, their power was naturally greater, but it has never died altogether... We want more facilities for education and enlightenment, which the Government alone can accord. We want to see the number of educated women, a mere handful now, daily increasing.*

### KAMALESH SHARMA: CLOSING THE GENDER GAP

June-August 2010

*Two-thirds of people living below the poverty line worldwide are women. But negative statistics showing the enormity of the challenge simply encourage us to try even harder... Women are crucial agents of transformation in economic recovery. For the first time, finance ministers and women's affairs ministers*

*will sit together at the same table, and ask themselves how our public finances can be channelled towards this goal.*

## Social history

From the rise of Bolshevism to elections in independent India, from the proliferation of air travel to the advent of the internet, *Overseas* has navigated numerous political and social concerns. As a non-political entity, ROSL has always tried to approach sensitive issues from a neutral standpoint, however, as an organisation based on a 'free and equal association of peoples', it has never shied away from the debates of the day, be it the 'No more slums' campaign of the 1930s, the call for a minimum wage, or gender and race equality.

### MY MONTHLY LETTER

March 1918

*If our Imperialism means anything, it must stand for "justice, freedom, order and good government" at home as well as over-seas. How can we talk about justice till we see that every worker, male or female, gets a living wage?*

### MY MONTHLY LETTER

August 1921

*Above all, 'Overseas' which has no axe to grind, seeks to be a message of hope of a better world.*

### BRITAIN'S IMMIGRANTS

April 1967

*Most of the problems are caused not by the immigrants themselves, their conduct or their habits, but by the attitudes and worries of the host community which notices the different coloured skins without seeing the ordinary human beings underneath.*



DEC 1918

The 'Armistice' edition reminds readers that "'Overseas' has never yet been produced under peace conditions."

AUG 1936

F C Yardley takes over as Associate Editor until his death in 1938, when Eric Chaplin becomes Editor.

OCT 1939

The cover changes to a simple red background with a small ship in black.

NOV 1939

A combined November-December issue is published "owing to war-time restrictions".

SEP 1943

The first of a series of cover portraits features Lord Mountbatten. "Many prominent and distinguished Empire personalities" follow until the Gill design is reinstated in May 1945.

JAN 1952

Tom Iremonger becomes Editor, increasing the size and introducing a changing cover image (the Gill design returns in 1958).





2



3



4

## Arts, music and humanitarian projects

Overseas has been pivotal to the promotion of ROSL's humanitarian, arts and music projects, including the Soldiers' and Sailors' Fund, education projects in Namibia since 1995 and Botswana since 2011, and the Annual Music Competition since 1952.

### MY MONTHLY LETTER

December 1920

The more we think about 'Overseas' the more enthusiastic do we feel about the possibilities that lie ahead of our magazine... standing for all the things that are worth while in life,

championing every worthy cause and passionately devoted to the service of the British Commonwealth and our fellows.

### THE OVER-SEAS LEAGUE DURING THE WAR

October 1939

I am convinced that every reader of Overseas is determined that our efforts in the present struggle shall be as great as twenty-five years ago... My wife, who as Lady des Voeux was Chairman of the Over-Seas League Soldiers' and Sailors' Fund in 1914-1918, will once again act as Chairman of our Fighting Forces Fund.

### RECORD ENTRY, EXCEPTIONALLY TALENTED YOUNG ARTISTS

August 1972

This Festival, which was started in 1949 with only ten competitors, has now so grown in size and importance that this year there were 257 entries from 10 countries... Concert engagements are arranged in London and the provinces, and all those who do well in the Festival are given an opportunity to play or sing at the monthly concerts of the Music Circle of the Royal Over-Seas League, thus gaining a platform and further public notice at no cost to themselves.

## The Commonwealth

Overseas has always been an outward-looking publication, connecting members around the world and sharing the stories of individuals and communities throughout the Commonwealth and beyond. Messages from members as far afield as Peru and Western Australia were included in the magazine as early as 1917 and are still included today.

### MY MONTHLY LETTER

December 1915

I want this magazine to be my monthly letter to my friends overseas, and I hope you will feel as personally about it as I do.

NOV 1952

Overseas becomes bi-monthly.

JAN 1959

Overseas becomes quarterly.

JAN 1964

The format is changed to a "12-page newspaper, 16 inches deep and 12 inches wide".

JAN 1967

Special edition following the death of Sir Evelyn Wrench.

OCT 1981

The format changes to A4 magazine.

FEB 1983

Elwyn Hartley Edwards becomes Editor.

1987

Fiona Murray takes over as Editor and Public Relations Director from Adele Smith, who held the position for one year.

JUN-AUG 1988

A 'new-look' journal includes colour pages for the first time.



## MY MONTHLY LETTER

February 1921

*The Over-Seas Club, which is to-day by far the strongest Empire movement, is destined one day, if it is true to its ideals of service, to exercise an influence far greater than any Government throughout the British Dominions. For the Over-Seas Club is an organisation of the people of the Empire and it is in the hands of the people that ultimate power rests.*

## LEARNING ABOUT THE EMPIRE

January 1947

*Last month our swift gallop across the pages of history brought us from Waterloo to the Diamond Jubilee, the period covering the swift transition of the struggling colonial settlements into self-governing members of the British Imperial family. The second half of the story – the development of Empire into Commonwealth – moves with less swiftness and romance, but is equally exciting as the achievements of an idea which is vital to the continued history of civilisation.*



5

## BREAKING NEWS

Ivy Storvik explores the tense relationship between the press magnate Lord Northcliffe, Sir Evelyn Wrench and the ROSL magazine



As an entrepreneur, journalist and builder of his own empire of newspapers, the founder of *The Daily Mail* and *The Daily Mirror*, Alfred Harmsworth (Lord Northcliffe), had an appetite for discovery and adventure. Innovation was a personal passion for the man who pioneered tabloid journalism, championed technological advances such as the car, telephone and aeroplane, and financed a (failed) North Pole expedition.

What ambitious newspaperman wouldn't have been inspired by the excitement that the Empire seemed to offer?

In 1906, Northcliffe's protégé, John Evelyn Wrench, dangled an enticing carrot in the form of an Empire-uniting 'central organisation'. His dream of bringing together disparate organisations to foster imperial unity proved catnip to Northcliffe, who agreed to finance Wrench's vision.

The press magnate spied a chance to extend the global reach of *The Daily Mail*, although this soon jarred with Wrench's own aims for the club. In one corner was Wrench's idealism; in the other, Northcliffe's nose for a story and eye for a business opportunity. The 'conscious uncoupling' that followed in 1914 was hardly surprising. Wrench appointed a chairman, Central Council and self-funding membership fee – and the modern-day structure of ROSL was born.

By this point, Northcliffe controlled more than 40% of Britain's daily papers and 15% of the Sunday papers. A year later, Wrench established an independent journal for the club, with lofty aims of its own. In 1916, Northcliffe penned two articles for the magazine about the implications of the war: 'World Chaos and After' and 'When Our Boys Come Home'. Although their personalities and aims sometimes clashed, the success of *Overseas* was, perhaps, assured by the background – firmly routed in the print press – of the two men who were responsible for establishing the club it serves.

“

**In one corner was Wrench's idealism; in the other, Northcliffe's nose for a story and eye for a business opportunity.**

The esteem in which Wrench continued to hold Northcliffe is evident in 'A Personal Tribute', which appeared in *Overseas* after Northcliffe's death in 1922: "A great business organiser and a great journalist he undoubtedly was, the greatest

of our age, but I like to recall his human side, which so often and so unexpectedly showed itself." Yet the article neglects to mention its subject's key involvement in founding the club. Wrench had learnt his journalistic craft from the best, it would seem. For as Northcliffe once famously said: "News is what somebody somewhere wants to suppress; all the rest is advertising."

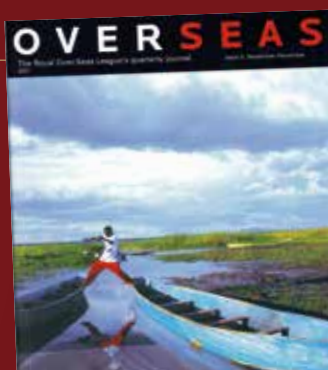
*Ivy Storvik is Deputy Editor at matchesfashion.com and a former Deputy Editor of Overseas.*

MAR-MAY 1989

Pat Treasure becomes Public Relations Director and Editor, leaving the PR part of the role in 1994.

DEC-FEB 2006

First full colour edition, as Vicky Baker becomes Editor.



SEP-NOV 2007

Overseas is completely redesigned.

JUN-AUG 2008

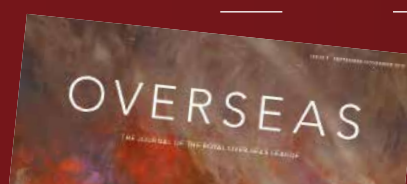
Miranda Moore becomes Editor.

DEC-FEB 2010

Special ROSL centenary edition.

SEP-NOV 2015

The launch of a new design and format.





Q&A

# LYN MILNE

After nearly 40 years linked to ROSL, Lyn Milne is a familiar name to many members and staff. Former *Overseas* Deputy Editor, Claire Simon, talks to the ROSL NZ Director about her longstanding commitment to the club



© Lyn Milne



**CLAIRE:** You grew up in New Zealand. How did you begin your journey with ROSL?

**LYN:** I was born in Christchurch and now live in Banks Peninsula, but I spent many years in the UK. I was 21 when I first went, and lived there for four years. Five years later, my husband, Keith, and I hankered to get back to London. I saw an ad in *The Times* with the words 'Commonwealth Club' and 'Marketing and Events Coordinator' – it was right up my street! That was in 1977 and led to some of the happiest working days of my life.

**CLAIRE:** As Deputy Editor, I worked closely with the Events Coordinator and feel lucky to have been involved with events during The Queen's Diamond Jubilee. What was the most memorable event you helped to organise?

**LYN:** In the 1980s we ran a Members' Ball with musicians in every room and a huge tombola in the central lounge. Robert Newell was House Manager then, and he made it such a success. Naturally, the visit by our Patron, HM The Queen, in 1980 is something that I'll never forget. But I also loved running the events to Glyndebourne when we took tables, chairs and did our own catering, and organising the Gold Cup Day at Ascot. They were brilliant fun, even when things didn't go to plan. One year I thought I'd lost a member – I searched for him for hours only to find out that he'd taken the train home!

**CLAIRE:** Yes, you have to be prepared for every eventuality at the events! I loved to meet members from all over the world and hear their fantastic stories. Did you feel the same?

**LYN:** Indeed! Seeing the clubhouse buzzing with members is like having your house full of good friends. Even coming back for the Diamond Jubilee celebrations, I have fond memories of walking around London with two Namibian delegates after a spectacular evening at St James's Palace. Their eyes were out on stalks. Showing people round the club was fantastic, too. In fact, that's how I was introduced to Professor Barrie Pettman.



1. Musical support: Lyn with the 2015 Pettman/ROSL ARTS Scholars, QUATTRO. 2. Celebration: With Margaret Lakin in 2008. 3. Old friends: With Myriam Barling (former Director of Arts) and Mark Walton (Gold Medallist 1978). 4. On stage: Lyn pictured in the September-November 1995 issue at the Annual Music Competition Final. 5. A farewell: Lyn leaves the ROSL staff in February 1983.

**CLAIRE:** Ah yes, tell us about the Pettman/ROSL ARTS Scholarship!  
**LYN:** In 2005, I was jointly instrumental in the formation of the Pettman National Junior Academy and the Pettman/ROSL ARTS Chamber Music Scholarship, which continue today. Thanks to Roderick Lakin's creative vision, and Professor Barrie and Maureen Pettman's financial assistance and love of New Zealand and chamber music, the scholarship developed from a programme sending one New Zealand musician to the UK annually, to sending a whole chamber ensemble.

**CLAIRE:** After five years at Over-Seas House, you left to open a shop. What prompted that decision?

**LYN:** I've always had a great admiration for New Zealand art. This gave Keith and I the inspiration to open a shop, KiwiFruits, to share the art with everyone in England. We began by selling handmade jewellery, individual clay pieces and native timber products.



## A LIFETIME WITH ROSL

### 1977

Lyn joins ROSL as Marketing and Events Coordinator, a role she holds for five years

### 1996

Returns to New Zealand and takes over from Gerald Collie as ROSL NZ Director

### 2005

Helps to establish the Pettman/ROSL ARTS Chamber Music Scholarship with Professor Barrie and Maureen Pettman

This soon expanded into everything we loved about New Zealand – from rugby jerseys and wine to books and souvenirs. We had a loyal Kiwi customer base and when we moved back to New Zealand in 1996 we sold the business to another Kiwi and it continued to thrive for many years. It was a huge wrench leaving ROSL and I missed the clubhouse, but the shop was pretty much a seven-day operation, so it kept me very busy.

**CLAIRE:** How does your story with ROSL continue today?

**LYN:** I manage the NZ Branches and formed a National Branch (NZHQ). The role has always been about promoting ROSL's aims and joining new members, which are my greatest thrills – I know how many opportunities membership offers. I feel lucky to have had a lifetime of meeting and assisting members, young musicians and artists, many of whom are now friends.

# FABERGÉ AT HOME

Kirker Tours expert Patrick Millar looks at the incredible heritage of St Petersburg, the cultural capital of Russia and home to Fabergé

Created by Peter the Great as a window on the west for his great trans-continental empire, St Petersburg was designed in the image of the perfect European city – inspired by the best features of cities such as Venice, Paris and Florence. During the 18th and 19th centuries, great baroque palaces were designed by architects including Domenico Trezzini and Bartolomeo Rastrelli, in a major departure from the traditional style of Moscow. These palaces housed the great noble families of the Russian court, and the embassies, artists and coteries who accompanied them, as the city became not only the new capital of the empire, but the beating cultural heart of Russia.

## Art and architecture

A wealthy and diverse social milieu attracted artists, composers, musicians and writers, who vied for the patronage of the tsars. St Petersburg's famous residents include Pushkin, Dostoyevsky, Rachmaninoff and Shostakovich.



## EASTER EGGS

Fabergé made 50 eggs for the Tsars from 1885 until the Russian Revolution of 1918.

Commissioned yearly, each Imperial egg was to contain 'a surprise': a beautiful example is the diamond necklace and ivory miniature hidden inside the 'Rose Trellis' egg of 1907 (pictured).

Today, visitors can explore a city which is much unchanged architecturally, thanks to a preservation order dating from 1762, which dictated that no building in the centre of the city should exceed the height of the Winter Palace.

Now home to the Hermitage Museum, the palace includes more than three million items and the largest selection of paintings in the world. However, one of the city's most interesting art collections is at the nearby Russian Museum. While the Hermitage is dedicated to European Old Masters and 20th-century painting, the Russian Museum is devoted entirely to Russian art: from beautiful golden icons, through the realists such as Ilya Repin, to the propaganda of Socialist Realism.

## Exquisite collection

Of the many baroque and neo-classical buildings on the Fontanka river, the Shuvalov Palace, recently converted to house the new Fabergé Museum, is one of the finest. Descended from French Huguenot

émigrés, Gustav Fabergé moved to St Petersburg to train as a Master Goldsmith, and established a small jewellery business in the city in 1842. But it was not until his son, Peter Carl Fabergé, took over the business in 1882, that the House of Fabergé began to attract the patronage of the Tsar.

His exceptionally intricate metalwork for the All-Russian Exhibition of the same year brought him to the attention of Alexander III, and in 1885 he was made Official Goldsmith to the Imperial family, tasked with creating the first of his famous Easter eggs for Tsarina Maria Feodorovna. This white enamelled egg, containing a gold 'yolk', and beautiful golden hen, is now exhibited at the Fabergé Museum, alongside a selection of other exquisite eggs and a dazzling collection of jewellery and decorative items.

*The Hermitage, Russian and Fabergé museums are all part of the itinerary for ROSL's 'Palaces and Galleries' tour of St Petersburg in May. See page 39 for details.*



Golden towers: View over the Admiralty building to the Winter Palace, and Peter and Paul Fortress



# Making a DIFFERENCE

WITH 1.6 MILLION PEOPLE VOLUNTEERING OVERSEAS EVERY YEAR, CHRISTINE WILDE TAKES A LOOK AT THE DIFFERENT PLACEMENT TYPES AND OPPORTUNITIES

More than 1.6 million people around the world volunteer internationally every year – 50,000 from the UK alone – and, for Britons, some of the most popular destinations include India, Thailand and Cambodia. Projects can involve a wide range of skills and expertise, and can focus on everything

from community development and education to disaster relief and habitat conservation.

## Types of volunteering

There are several types of placement, from short-term to long-term opportunities; fee-based (where volunteers pay to participate) to subsidised (where they are paid a stipend); and from skills-based to unskilled work. Ranging from one week to three months, short-term placements tend to be structured programmes that rarely demand any specialist skills or experience. From monitoring turtle nesting sites

to running after-school clubs, these projects usually charge a fee that covers accommodation, food and sometimes basic training.

There are some organisations, such as the US-based disaster-relief agency All Hands (hands.org), that do not set a minimum commitment time-frame. Nor do they require a fee, although volunteers pay their own travel costs. Working to support communities following a natural disaster, volunteers assist with recovery efforts including clearing debris, demolishing damaged buildings and home repairs.

## Sharing skills

Although unskilled placements are by far the most common, accounting for about 80% of international volunteering worldwide, certain projects require skilled volunteers with specific qualifications or professional experience to assist for longer periods, from six months to two years or more. These are usually run by not-for-profit organisations, tend not to require a participation fee and often cover the basic living expenses of volunteers. Organisations such as VSO (www.vsointernational.org) organise placements in disciplines such as education, health, IT and engineering.

Many ROSL members run their own initiatives. Terrence and

Rohini McKee are founders of the charity Interlock (www.interlock.co.uk), which supports sustainable development in deprived rural areas of India. For almost 40 years, they have overseen a variety of projects, including the installation of standpipes, and the construction of a maternity centre, creating local jobs as well as much needed facilities. They also run a solar eco guest house, which helps to fund their projects.

Interlock is looking for volunteers for alternative energy projects, and to teach hospitality and IT skills to vulnerable young women. To find out more, contact [interlock@interlockdirect.co.uk](mailto:interlock@interlockdirect.co.uk) or visit [bit.ly/1LBApEX](http://bit.ly/1LBApEX).

*Volunteer: A traveller's guide to making a difference around the world* (media.lonelyplanet.com/pdfs/volunteer-book.pdf) is a great resource for those looking for opportunities, providing comprehensive listings and contacts for organisations worldwide.

Although ROSL cannot facilitate volunteer opportunities with our humanitarian projects, you can support ROSL wherever you are in the world in a variety of ways, including helping with your local branch, fundraising for our arts or humanitarian projects, or simply by becoming a Friend of ROSL ARTS. Contact [volunteers@rosl.org.uk](mailto:volunteers@rosl.org.uk) for details.



1. Providing care: A VSO nurse with mother and baby in Ethiopia. 2. A safe space: Interlock builds a clinic with international and local volunteers. 3. For the future: VSO volunteers at a nursery in Rwanda. 4. All Hands: A volunteer takes a break. 5. Working together: Rebuilding with All Hands.



# Treasured PLACES

The Editorial Team reveal their favourite haunts in London and Edinburgh



## Building sights

My favourite event of the year falls on the third weekend of September, when hundreds of London's most interesting and inspiring buildings open their doors to the general public (the ROSL clubhouse among them) for **Open House London** ([www.openhouselondon.org.uk](http://www.openhouselondon.org.uk)). At other times, my architectural 'fix' comes from the **Sir John Soane's Museum** ([www.soane.org](http://www.soane.org)), the architect's intriguing home, with hidden artworks and a treasure trove of artefacts from his travels in the basement; and the white beacon of the **Shri Swaminarayan Temple** ([londonmandir.baps.org](http://londonmandir.baps.org)) in Neasden, which rises elaborately out of the grimy local neighbourhood.

My summer treat includes a trip to **Regent's Park Open Air Theatre** ([openairtheatre.com](http://openairtheatre.com)); while the **Hayward Gallery** (now closed for a two-year refurbishment) is one of the city's most exciting, inspiring and interactive galleries at any time of year ([www.southbankcentre.co.uk/venues/hayward-gallery](http://www.southbankcentre.co.uk/venues/hayward-gallery)).

MIRANDA MOORE, EDITOR

## All sports

Whenever possible, I walk home from work, wandering through St James's towards **Trafalgar Square**, where an eclectic mix of street performances, protests, concerts and vigils ensures a different experience every day. I could spend days exploring the majesty of the **Natural History Museum** ([www.nhm.ac.uk](http://www.nhm.ac.uk)), inside and out. Down the road, the **Science Museum** ([www.sciencemuseum.org.uk](http://www.sciencemuseum.org.uk)) is an intellectual labyrinth that draws me in time and again, fostering an affection that is only rivalled by my fondness for **London Zoo** ([www.zsl.org/zsl-london-zoo](http://www.zsl.org/zsl-london-zoo)).

I love watching live sport and have been lucky enough to see both national and local teams compete at **Lord's** ([www.lords.org](http://www.lords.org)), **Wembley** ([www.wembleystadium.com](http://www.wembleystadium.com)) and **Twickenham** ([www.englandrugby.com/twickenham](http://www.englandrugby.com/twickenham)), which also offer stadium tours. Being part of the crowd at these world-renowned venues is an incredible buzz that adds to the energy and excitement of the games.

CHRISTINE WILDE, DEPUTY EDITOR



## 1. Intricate: Shri Swaminarayan Hindu temple.

Swaminarayan Hindu temple.

## 2. Majestic: The Natural History Museum's famed Hintze Hall.

The Natural History Museum's famed Hintze Hall.

## 3. Interactive: Visitors explore an exhibition at the Wellcome Collection.

Visitors explore an exhibition at the Wellcome Collection.

## 4. Historic: Edinburgh Castle.

Edinburgh Castle.

## 5. In bloom: Columbia Road's Sunday morning flower market.

Columbia Road's Sunday morning flower market.

## 6. Royal Academy: Burlington House on Piccadilly.

Burlington House on Piccadilly.

## 7. Queen's Gallery: David Wilkie's 'The Entrance of George IV to Holyroodhouse', part of the 'Scottish Artists 1750-1900: From Caledonia to the Continent' exhibition at Holyroodhouse until February (then at Buckingham Palace).

David Wilkie's 'The Entrance of George IV to Holyroodhouse', part of the 'Scottish Artists 1750-1900: From Caledonia to the Continent' exhibition at Holyroodhouse until February (then at Buckingham Palace).

Edinburgh Castle.

Edinburgh Castle.

Edinburgh Castle.

Edinburgh Castle.

Edinburgh Castle.

Edinburgh Castle.

Edinburgh Castle.

Edinburgh Castle.

Edinburgh Castle.

Edinburgh Castle.

Edinburgh Castle.

Edinburgh Castle.

Edinburgh Castle.

Edinburgh Castle.

## Wellcome to Euston

Having commuted into Euston for many years, I know the area well.

The **Wellcome Collection** ([wellcomecollection.org](http://wellcomecollection.org)) is a stone's throw from the terminus, and one of my favourite places. It has interactive galleries exploring medical discourse, and a wonderful reading room complete with board games, cushions and the chance to send (free) themed postcards!

As a student, I spent many hours at the majestic **British Library** ([www.bl.uk](http://www.bl.uk)), which offers great coffee and fascinating exhibitions. A firm favourite is **Hint Hunt** ([hinthunt.co.uk](http://hinthunt.co.uk)), one of a host of live escape games – where you solve puzzles and codes to get free – that have taken the country by storm.

TARA COOPER, EVENTS COORDINATOR AND MARKETING EXECUTIVE

## On the Fringe

During the **Fringe Festival**, Edinburgh has an incomparable energy and each day can be crammed with a multitude of adventures. **Edinburgh Castle** ([www.edinburghcastle.gov.uk](http://www.edinburghcastle.gov.uk)) offers a comprehensive audio guide that is sure to have you imagining bygone battles and daring escapades.

**Gilded Balloon** ([www.gildedballoon.co.uk](http://www.gildedballoon.co.uk)) is home of comedy at the Fringe, while the **Edinburgh Military Tattoo** ([www.edintattoo.co.uk](http://www.edintattoo.co.uk)) is the festival's most eye-catching spectacle, with fireworks and hundreds of bagpipes. **BrewDog Edinburgh** ([www.brewdog.com](http://www.brewdog.com)) is a great pub with a range of craft beers.

TAIT BECKE, COMMUNICATIONS OFFICER





### Theatre of life

I always enjoy a stroll along **Columbia Road** ([www.columbiaroad.info](http://www.columbiaroad.info)) to browse the interesting interior design and vintage shops, perfect for quirky gifts. The famous flower market on a Sunday morning is a fragrant extra. **Crystal Palace Park** ([www.bromley.gov.uk](http://www.bromley.gov.uk)) is a must for families, with a museum, maze, boating lake, sports stadium, petting zoo and dinosaurs! For theatre, pubs such as **The Kings Head** ([www.kingsheadtheatrepub.co.uk](http://www.kingsheadtheatrepub.co.uk)) and **Brockley Jack** ([www.brockleyjack.co.uk](http://www.brockleyjack.co.uk)) provide intimate settings for high-quality performances.

In Edinburgh, **The Meadows** provides the perfect running route,

with plenty to look at as you jog past locals practising their golf swings, the Quartermile and, during the festival, a circus tent.

GEMMA MATTHEWS, DIRECTOR OF MARKETING

### Close to home

There is much to keep you entertained near the London clubhouse. I love the **Royal Academy of Arts** ([www.royalacademy.org.uk](http://www.royalacademy.org.uk)), while in nearby **Pickering Place**, I like to check that the sun dial is still in the square – famed for being the smallest in London and the scene of 18th-century duels. In **Berry Brothers** wine shop next door, you can see the scales on which Lord Byron used to weigh himself.

On Sundays, my favourite spot is **Herne Hill Market**, just outside the train station. It has food, flower and bric-a-brac stalls, and the best handmade sausage rolls I've ever tasted.

MARGARET ADRIAN-VALLANCE, DIRECTOR OF EDUCATION & DEVELOPMENT PROJECTS

### Mile highs

You can do little better, as a first-time visitor to Edinburgh, than to turn left out of the beautifully re-roofed



Shri Swaminarayan temple, Jo.sau (CC BY 2.0); Natural History Museum - Stairs, Barney Moss (CC BY 2.0); Wellcome Collection, Medicine Now, Wellcome Library, London; Columbia Road, Joel Suss (CC BY 2.0); Burlington House; view from Piccadilly, Benedict Johnson; Sir David Wilkie, The Entrance of George IV to Holyroodhouse, 1822-30.

Waverley Station and cross the North Bridge to the **Royal Mile** ([www.royal-mile.com](http://www.royal-mile.com)). There, book-ended by the Castle and Holyroodhouse Palace, lies a rich tapestry of Scottish history. My favourites? **Holyroodhouse Palace** is a must ([www.royalcollection.org.uk/visit/palace-of-holyroodhouse](http://www.royalcollection.org.uk/visit/palace-of-holyroodhouse)); **John Knox House** interesting; and **Canongate Kirk** a fascinating blend of church, social and military history ([www.canongatekirk.org.uk](http://www.canongatekirk.org.uk)). Beyond the Royal Mile, the senses will be satisfied by music at **Usher Hall** ([www.usherhall.co.uk](http://www.usherhall.co.uk)) and art at the three **National Galleries of Scotland** ([www.nationalgalleries.org](http://www.nationalgalleries.org)).

RODDY PORTER, DIRECTOR-GENERAL



## LONDON & EDINBURGH highlights



EDINBURGH

### ARTHUR MELVILLE: ADVENTURES IN COLOUR

Until 17 January 2016, **Scottish National Gallery**  
Landmark exhibition devoted to one of Scotland's most exciting 19th-century watercolour painters.  
£9; [www.nationalgalleries.org/whatson](http://www.nationalgalleries.org/whatson)

LONDON

### THE WORLD GOES POP

Until 24 January 2016, **Tate Modern**  
This explosive exhibition reveals how different countries responded to the pop art movement of the 60s and 70s.  
£16; [www.tate.org.uk/whats-on](http://www.tate.org.uk/whats-on)

LONDON

### COSMONAUTS: BIRTH OF THE SPACE AGE

Until 13 March 2016, **Science Museum**  
Discover the dramatic story of Russian space travel.  
£14; [www.science-museum.org.uk](http://www.science-museum.org.uk)



EDINBURGH

### TRACKS OF THE WINTER BEAR

9-24 December 2015, **Traverse Theatre**  
Double bill of short seasonal plays with an evocative musical score.  
£18; [www.traverse.co.uk](http://www.traverse.co.uk)



LONDON

### LA TRAVIATA

16 January - 19 March 2016, **Royal Opera House**  
Vivid production of Verdi's tragic opera about a courtesan who sacrifices all for love.  
£9-£200; [www.roh.org.uk/traviata](http://www.roh.org.uk/traviata)

EDINBURGH

### RUSSIAN EVENING

31 January 2016, **St Cuthbert's Church**  
Scottish Sinfonia

performs music by Prokofiev, Borodin and Tchaikovsky.  
£14; [www.usherhall.co.uk](http://www.usherhall.co.uk)



EDINBURGH

### RUSSIAN STATE BALLET OF SIBERIA

2-6 February, **Edinburgh Playhouse**  
From Swan Lake to Giselle, five ballets on consecutive nights.  
£10.90-£61.90;  
[www.edinburghtheatre-guide.com/dance.htm](http://www.edinburghtheatre-guide.com/dance.htm)



# ROSL EVENTS

*Just some of the highlights over the next few months, followed by the full calendar*

## Christmas and New Year at ROSL

Celebrate with our festive packages at your home-away-from-home in London and Edinburgh

**For more information about these offers, see page 40 of the September-November 2015 issue ([www.rosl.org.uk/magazine.php](http://www.rosl.org.uk/magazine.php)). Package elements can be booked separately; see page 41 for details.**

### London

Stay at the London clubhouse for two or three nights at Christmas and New Year and enjoy special rates for catering, accommodation and events. The three-night offer includes a mulled wine and

mince pie reception and film screening on Christmas Eve; a sparkling drinks reception, four-course Christmas lunch with wine, refreshments, a visit from Father Christmas and board games on Christmas Day; and a Boxing Day brunch, served until midday, and guided walking tour of St James's and Piccadilly.

#### BOOKING INFORMATION

Three nights double/twin from £333pp; single from £390pp. To book, contact [reservations@rosl.org.uk](mailto:reservations@rosl.org.uk) or +44 (0)20 7408 0214 x217.



Caltriana Nicholson (CC BY SA 2.0)

### Edinburgh

Christmas is one of the best times to visit Edinburgh, so why not take advantage of our two-night Christmas shopping breaks, including 20% off food and drink at the clubhouse? Join us for three nights over Christmas and enjoy a drink and canapé reception, three-course meal, visit from Father Christmas, and a buffet in the evening on Christmas Day. Or stay from 30 December to 1 January and celebrate New Year's Eve with a four-course dinner,

ceilidh and the chance to watch the fireworks from our roof-top terrace.

#### BOOKING INFORMATION

Two-night shopping break double/twin from £139; single from £119.

Three-night Christmas package double/twin from £445; single from £290.

Three-night New Year stay double from £905; single from £505.

To book contact [reception@rosl-edinburgh.org](mailto:reception@rosl-edinburgh.org) or +44 (0)131 225 1501.

## HIGHLIGHTS *from our winter programme*

ME

### BLACK-TIE DINNER AND CEILIDH

*Friday 29 January, 7pm, Over-Seas House London*

After the success of last year's Black-tie Dinner and Ceilidh, ROSL is delighted to honour Burns Night once again by hosting a Scottish dinner with a traditional ceilidh and folk band. Following a drinks reception in one of our beautiful function rooms, members and guests will sit down to a sumptuous



three-course meal with haggis and whisky. Afterwards, an expert caller will lead the crowd in a ceilidh and there will be the traditional address to the haggis. **£75; table of ten £675. Guests welcome.**

YM

### YM'S ANNUAL MUSIC COMPETITION CONCERT AND DRINKS

*Thursday 4 February, 7pm, Over-Seas House London*

In February and March, ROSL hosts the section finals for the Annual Music Competition. To get younger members prepped for the occasion, we have invited back music competition finalists to perform some of their favourite pieces of music, and give us an insight into



the competition and its impact from their perspective. Tickets include a glass of wine on arrival, with the opportunity to buy further drinks from the Bar. **£10. Guests welcome. Tickets on the door, subject to availability.**



ROSL  
ARTSROSL  
ScotlandLondon  
GroupMembers'  
EventsYounger  
MembersDiscussion  
Group

For booking information see page 46.

# \$100 MILLION

THE PRICE PAID BY THE MUSEUM'S FOUNDER, IN 2004, FOR THE COLLECTION OF NINE IMPERIAL EGGS HOUSED IN THE FABERGÉ MUSEUM. (SEE BELOW)

## ROSL international tours

ME

### PALACES AND GALLERIES TOUR OF ST PETERSBURG

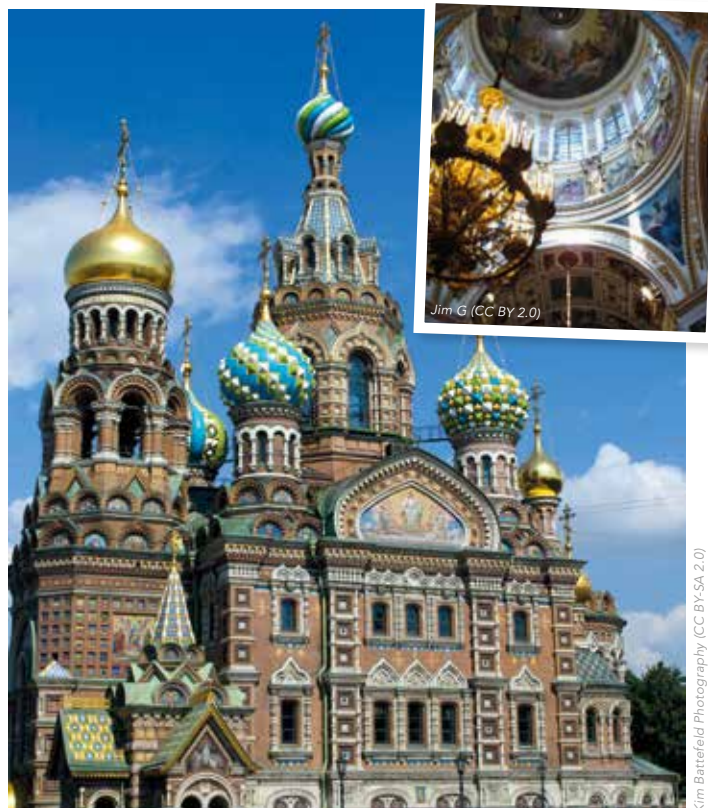
*Thursday 12 - Wednesday 18 May 2016, St Petersburg, Russia*

St Petersburg is steeped in history and the arts, embodying Peter the Great's vision of a modern, forward-thinking Russia. During this six-night exclusive ROSL members' tour, we will visit eight palaces, including Mikhailovsky, the Hermitage and Peterhof, and experience a panoramic tour of the city, visiting key sites such as the Church of the Saviour on Spilled Blood (pictured) and the Peter and Paul Fortress. A day will also be set aside to explore the city and visit the recently

opened Fabergé Museum, so don't miss out on this once-in-a-lifetime opportunity.

Prices are based on two people sharing a superior double/twin and include return flights, six nights' accommodation with breakfast, five dinners, two lunches, a Russian visa, all sightseeing, entrance fees and gratuities, and the services of a Kirker Tour Lecturer. Booking deadline 1 March 2016; everyone who books must be fully insured.

See page 34 for our article exploring art in St Petersburg. **£2,492pp; single supplement £357. To reserve your place, contact Lucy Ayling on [lucy.ayling@kirkerholidays.com](mailto:lucy.ayling@kirkerholidays.com) or +44 (0)20 7593 2284.**



Kim Batterfield Photography (CC BY-SA 2.0)



ME

### BATTLEFIELD TOUR OF GALLIPOLI

*Monday 23 - Saturday 28 May 2016, Gallipoli, Turkey*

Over the last three years, the ROSL Battlefield Tours have marked the centenary of WWI with visits to key battlefields in France and Belgium. In 2016, we go to Turkish shores to visit the battlefields of the Gallipoli peninsula, where so many Commonwealth lives were lost. ROSL Director-General Roddy Porter will accompany the tour, along with our expert Gallipoli guide, Simon Jones.

The nationhood of Australia and New Zealand is said to have been forged in the nine-month Gallipoli campaign. Operations in the

Dardanelles began with a naval bombardment. British, French and ANZAC (Australian and New Zealand Army Corps) forces then landed on the Gallipoli peninsula on 25 April 1915, where a second landing made little progress. The campaign stagnated and only the evacuation was a success.

Our tour will visit the Anzac Cove landing beaches and the inland battlefields of Lone Pine and the Nek. At Cape Helles, we will see V and W Beaches and the British memorial, and tour the landing areas by boat to gain an insight into the difficulties of the terrain from the perspective of the assaulting troops. Finally, we will explore the Suvla Bay landings and the struggle for the heights of Sari Bair by

ANZAC and Gurkha forces. The rugged and haunting peninsula, with its many cemeteries and memorials, remains a moving testament to the soldiers who fought here a century ago.

Prices are based on members sharing a twin/double and include return flights, all local transport, five nights 4-star accommodation, four dinners, four lunches, the services of an expert lecturer and tour manager, and all entrance fees. Booking deadline 1 March 2016. **£1,099; single supplement £115. Land-only reduction £260 (excludes flights/taxes/transfers). Outside-UK travel to/from Istanbul can be arranged as part of your booking. To book, contact [sales@coxandkings.co.uk](mailto:sales@coxandkings.co.uk) or +44 (0)20 7873 5000.**

## DECEMBER

LG

**LONDON GROUP CHRISTMAS LUNCH**  
*Wednesday 2 December, 12.30pm, Princess Alexandra Hall, Over-Seas House London*  
This ever popular celebration includes a drinks reception and three-course festive meal with wine, accompanied by live music and followed by a free prize draw. To attend, write to Celia Goh, London Group, c/o Porter's Desk, Over-Seas House London, enclosing a stamped addressed envelope and noting dietary and seating requests. For further details, call +44 (0)20 8567 1525.  
**£55; LG members £50.**



YM

**FIRST THURSDAY CHRISTMAS DRINKS**  
*Thursday 3 December, from 6pm, Duke of York Bar, Over-Seas House London*  
The last First Thursday of 2015 will bring mince pies, mulled wine, obligatory Christmas jumpers and a live performance of Christmas classics. The opening of an exhibition in the Central Lounge to mark 100 years of Overseas will add to the celebratory atmosphere.  
**Free. Guests welcome.**

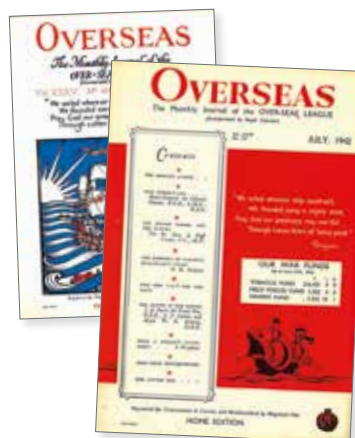
ME

**FESTIVAL OF CAROLS AND READINGS**  
*Sunday 6 December, 3.30pm, St James's Church and Over-Seas House London*  
Families, individuals and guests are welcome at our annual Christmas celebration, with fabulous singers and festive readings. After a wonderful carol service, we will return to the clubhouse for a delicious Christmas afternoon tea, including a glass of prosecco, in the Hall of India and Pakistan. Father Christmas will also visit, with gifts for all those on the 'nice' list!  
**£20; guests £22.50.**



RA

**OVERSEAS CENTENARY EXHIBITION**  
*Friday 4 December – Friday 8 January, daily, Over-Seas House London*  
Find out how Overseas has developed over the last 100 years through displays taken from the archives and a few specially commissioned pieces. Come to the **Private View on Thursday 3 December** and join in the First Thursday Christmas celebrations as well.  
**Free. Guests welcome.**



ME

**CLUBHOUSE CAROLS**  
*Tuesday 15 December, 6.30pm, Central Lounge, Over-Seas House London*  
A ROSL Christmas wouldn't be complete without the community coming together to sing Christmas carols. Our pianist will lead us through the classics, with mulled wine and mince pies to follow, so start dusting off those vocal cords; no booking required. This year we are introducing an (optional) Christmas-themed quiz afterwards (see details right).  
**Free. Guests welcome.**

ME

**CHRISTMAS CLUB QUIZ**  
*Tuesday 15 December, 7.45pm, Over-Seas House London*  
After clubhouse carols, join fellow members at ROSL's Christmas-themed quiz night. Our experienced quiz master has a reputation for running the hardest pub quiz in the UK and will be putting your team through its paces for the last time in 2015. Tickets include a glass of wine on arrival, with opportunities to order food and drinks from the Bar. The Christmas quiz will start later than usual, at 7.45pm, and will end by 10pm. Maximum team size of six; individuals and small groups will be placed in teams.  
**£5. Guests welcome.**



RS

**ARTS LUNCH AND CHRISTMAS CAROLS**  
*Wednesday 9 December, 12pm, Over-Seas House Edinburgh*  
ROSL Chairman Simon Ward and his wife Raye will join members for lunch, with a talk by Ian Gilmour, Minister of St Andrew's and St George's West. Carol singing, led by choirmaster Brigitte Harris, will follow, with tea, coffee and mince pies.  
**£8.**



ME

## CHRISTMAS DAY LUNCH

*Friday 25 December, 12pm,  
Hall of India and Pakistan,  
Over-Seas House London*

Enjoy a sparkling drinks reception and a traditional four-course Christmas meal, including half a bottle of wine, coffee and mince pies. Lunch is followed by a visit from Father Christmas with gifts for everyone, family board games in the Drawing Room with complimentary tea, coffee and biscuits, and an opportunity to watch The Queen's Speech on the big screen.

This event is also available as part of our one-, two- and three-night London Christmas packages. For details, see page 38 or contact [reservations@rosl.org.uk](mailto:reservations@rosl.org.uk).

**Tickets £85pp. To book lunch alone, contact [rosldining@graysonsrestaurants.com](mailto:rosldining@graysonsrestaurants.com) or +44 (0)20 7629 0406.**

RS

## CHRISTMAS DAY LUNCH

*Friday 25 December, 12pm,  
Over-Seas House Edinburgh*

Celebrate Christmas at your home-away-from-home with our traditional three-course lunch, including Kir Royal and festive canapés on arrival, and tea, coffee, mince pies and gifts for all the family to follow.

This event is also available as part of our three-night Edinburgh Christmas package. For details, see page 38 or contact [reception@rosl-edinburgh.org](mailto:reception@rosl-edinburgh.org). **Tickets £57; guests £65.**



ME

## BOXING DAY WALKING TOUR

*Saturday 26 December, 2pm,  
Over-Seas House London*

Discover more about Piccadilly and St James's as our Blue Badge guide explains the history of this exclusive area. We will see the elegant palaces, shops and exclusive clubs whose discreet entrances conceal an indiscreet and, sometimes, scandalous past. We will also look at what the future holds for the area. This winter walk is a refreshing way to spend Boxing Day before retiring to the club for a post-Christmas snack or drink.

This event is also available as part of our London Christmas packages. For details, see page 38.

**Tickets £18. Guests welcome.**

RS

## HOGMANAY DINNER AND DANCE

*Thursday 31 December, 7pm,  
Over-Seas House Edinburgh*

Watch the fireworks from the finest viewpoint in Edinburgh and enjoy reception cocktails, a three-course

meal with wine and champagne, and black bun and shortbread at midnight.

This event is also available as part of our three-night Edinburgh Hogmanay package. For details, see page 38 or contact reception [@rosl-edinburgh.org](mailto:@rosl-edinburgh.org).

**Tickets £105; guests £129; children (under 14) £85.**



## JANUARY 2016

RA

## OVERSEAS CENTENARY EXHIBITION

*Until Friday 8 January, daily,  
Over-Seas House London*

See December listing for details.

**Free. Guests welcome.**

LG

## VISIT TO GOLDSMITHS' HALL

*Monday 11 January, 2pm,  
Goldsmiths' Hall*

The London Group has secured tickets for this rare open day. Founded in 1300, the Goldsmiths' Company moved to this magnificent building in 1835. Gold and silver are assayed and hallmarked here, and newly-minted coins are tested.

**£14; LG members £12.**

RS

### EDINBURGH FILM NIGHT

*Tuesday 12 January, 5pm, Over-Seas House Edinburgh*  
Comedy-drama following a 25-year relationship between a wealthy, strong-willed Jewish matron and her equally indomitable African-American chauffeur. With coffee, popcorn and ice-cream.

**Tickets for entry and refreshments £7.50.**



Matt Warren

ME

### CLUB QUIZ

*Wednesday 13 January, 7.30pm, Over-Seas House London*

If you missed out on our quiz in 2015, why not make it your New Year's resolution to try our monthly quiz nights this year? Tickets include a glass of wine, with opportunities to order further drinks and food from the Bar.

**£5. Guests welcome.**

LG

### ASPECTS OF ST PETERSBURG

*Thursday 21 January, 6pm, Over-Seas House London*

Major Paul Whittle gives a talk on the history of the Russian



Christian Jiménez (CC BY 2.0)

metropolis, founded by Peter the Great in 1704. The imperial capital for two centuries, the city remains the country's cultural centre. This event is also a fantastic introduction for members going to St Petersburg in May on ROSL's six-night 'Palaces and Galleries' tour (for details, see page 39).

**Free. London Group members and overnight guests at Over-Seas House only.**

ME

### BLACK-TIE DINNER AND CEILIDH

*Friday 29 January, 7pm, Over-Seas House London*

Celebrate Burns Night with a drinks reception and sumptuous three-course meal, including haggis and whisky, followed by a ceilidh. See page 38 for details.

**£75; table of ten £675.**

**Guests welcome.**

RS

### BURNS NIGHT DINNER

*Saturday 30 January, 7.30pm, Over-Seas House Edinburgh*

Celebrate the life and work of the great Scottish bard at this black-tie dinner. Enjoy a welcome drink before tucking into the traditional three-course meal, including wine and a glass of whisky.

The Immortal Memory will be given by Rev Dr G Russell Barr and the Address to a Haggis by Eric Milligan.

**£35; guests £40.**



National Gallery of Scotland

## FEBRUARY 2016

RA

### ANNUAL MUSIC COMPETITION SECTION FINAL: WIND AND PERCUSSION

Season tickets available  
SEE ABOVE

*Tuesday 2 February, 7pm, Princess Alexandra Hall, Over-Seas House London*

The finalists of the wind and percussion section will amaze you with their incredible accuracy and beautiful musicianship. They will be competing for £5,000 and the chance to perform at the Grand Final in Cadogan Hall on 1 June. **£15; Friends of ROSL ARTS £12. Includes wine.**



James McCormick

YM

### ANNUAL MUSIC COMPETITION CONCERT AND DRINKS

*Thursday 4 February, 7pm, Over-Seas House London*

ROSL Annual Music Competition finalists give an insight into the contest from their unique perspective. See page 38 for details.

To find out more about the contest, see our 'Audience Guide' by ROSL award winner Simon Lepper, on page 24.

**£10. Guests welcome.**

**Tickets available on the door, subject to availability.**



# AMC SEASON TICKET OFFER

COME ALONG TO ALL THE ANNUAL MUSIC COMPETITION SECTION FINALS AND THE OVERSEAS AWARDS FOR JUST £60; OR £50 FOR FRIENDS OF ROSL ARTS. (SEE BELOW FOR CONCERT DATES AND DETAILS)



RS

## EDINBURGH FILM NIGHT

*Tuesday 9 February, 5pm, Over-Seas House Edinburgh*

In this tragic romance set against the backdrop of World War II, a young nurse tends to a badly-burned plane crash victim, helping him to piece together his identity. With coffee, popcorn and ice-cream.

**Tickets for entry and refreshments £7.50.**



James McCormick

LG

## VISIT TO TWO TEMPLE PLACE

*Wednesday 10 February, 2pm, Two Temple Place*

Private tour of this extraordinary Victorian mansion, built by William Waldorf Astor as his residence and estate office on the Embankment. The interior is a testament to the skills and expertise of some of the finest sculptors of the 19th century. There will also be an opportunity to see the building's 2016 exhibition of Egyptological collections in and around the UK.

**£14; LG members £12.**



Bill Barr

RS

## YEHUDI MENUHIN SCHOOL CONCERT

*Friday 12 February, 6.30pm,*

*Over-Seas House Edinburgh*

Students from the Yehudi Menuhin School return to the Edinburgh clubhouse for their annual concert.

Wine and canapés will be served afterwards.

**£10; Friends of ROSL ARTS**

**£8; guests £12.**

ME

## CLUB QUIZ

*Wednesday 10 February, 7.30pm,*

*Over-Seas House London*

It's quiz time again, as members face five perplexing rounds of general knowledge for another fun-filled evening. Tickets include a glass of wine, with opportunities to order further drinks and food from the Bar.

**£5. Guests welcome.**

RA

## ANNUAL MUSIC COMPETITION SECTION FINAL: SINGERS

*Tuesday 9 February, 7pm,*

*Princess Alexandra Hall,*

*Over-Seas House London*

The singers section will take you through a wide range of emotions, from glorious victories to devastating tragedies. Filled with must-see performances, this event also provides a sneaky chance of spotting the Gold Medallist before the Final, with two of the last six winners coming from this section. The winner will receive £5,000 and the opportunity to compete in the Grand Final in Cadogan Hall on 1 June.

**£15; Friends of ROSL ARTS**

**£12. Includes wine.**

RA

## ANNUAL MUSIC COMPETITION SECTION FINAL: STRINGS

*Tuesday 16 February, 7pm,*

*Princess Alexandra Hall,*

*Over-Seas House London*

Finalists of the strings section



James McCormick

ME

## CHEESE AND WINE FOOD FEAST

*Friday 12 February, time tba, Over-Seas House London*

Continuing our seasonal food feasts, Chef Kevin Casizzi pays homage to some of the best of British cheeses with a specially crafted menu. With produce supplied by Buchanan's Cheesemonger, this delicious seven-course cheese-inspired tasting menu will be accompanied by a selection of complementing British wines and wines produced by British winemakers abroad.

**£85pp. For details or to book, contact [rosldining@graysonsrestaurants.com](mailto:rosldining@graysonsrestaurants.com) or call +44 (0)20 7629 0406.**



# ROSL calendar

## EVENTS

RA ROSL  
ARTS

RS ROSL  
Scotland

LG London  
Group

ME Members'  
Events

YM Younger  
Members

DG Discussion  
Group

For booking information see page 46.

RS

### ARTS LUNCH

*Wednesday 17 February, 12pm,  
Over-Seas House Edinburgh*

Guest speaker Alistair Gibb, specialist advisor to Co-operative Development Scotland, loan assessor for the East of Scotland Investment Fund and Chair of the Church of Scotland Investors Trust, gives a talk on 'Banking: Invented in Scotland', about his life as a banker, company director, adviser and lecturer. This is followed by a two-course lunch with coffee.

**£15; guests £20.**

LG

### TALK: 'A VISIT TO GALLIPOLI'

*Thursday 18 February, 6pm,  
Over-Seas House London*

Former ROSL Chairman Stanley Martin gives a talk about the disastrous military campaign in Gallipoli during which 58,000 Allied soldiers and 87,000 Ottoman troops lost their lives. The nationhood of Australia and New Zealand is said to have been forged in the nine-month campaign, which resulted in more than 35,500 ANZAC (Australian and New Zealand Army Corps) casualties. With its many memorials, the rugged peninsula remains a moving testament to the events of a century ago.

This talk will also provide a valuable background for those joining the ROSL Battlefield Tour to Gallipoli in May (for details, see page 39). **Free. London Group members and guests at Over-Seas House only.**

ME

### BEHIND THE SCENES OF THE KEYBOARD SECTION FINALS

*Tuesday 23 February, 6pm,  
Over-Seas House London*

To celebrate the ROSL Annual Music Competition (AMC), Carson Becke *piano*, Assistant Director of Music at St Hilda's College, Oxford, will lead a pre-concert discussion about the keyboard section final. Members will learn what to look out for during the concert, how the judges mark competitors and what makes an outstanding performance, followed by a Q&A. Tickets include entry to the keyboard section final, immediately afterwards (for details, see right), and a glass of wine before and after the concert.

**£20. Guests welcome.**

**To book, contact**  
**membersevents@rosl.org.uk.**



James McCormick

RA

### ANNUAL MUSIC COMPETITION SECTION FINAL: KEYBOARD

*Tuesday 23 February, 7pm,  
Princess Alexandra Hall,  
Over-Seas House London*

The keyboard finalists compete in the last of the section finals. Audience

members can expect flying fingers, tingling melodies and complex musicality, as the musicians showcase the very best that they have to offer. The finalists will have the chance to win £5,000 and compete in the Grand Final on 1 June.

**Tickets £15; Friends of ROSL ARTS £12. Includes wine.**



Dennis Jarvis



# 1913

THE YEAR OF THE FIRST INTERNATIONAL WOMEN'S DAY, AT A TIME OF GREAT UNREST AND CALLS FOR GREATER EQUALITY. OBSERVED EVERY YEAR SINCE, ITS THEME FOR 2015 IS 'MAKE IT HAPPEN'. (SEE 8 MARCH)

RS

## NETWORKING DINNER

*Wednesday 24 February, 6pm,  
Over-Seas House Edinburgh*

International banker and ROSL Central Council member Clive Carpenter gives a talk entitled 'Africa: A myriad of opportunities, a continent of superlatives' at this two-course dinner hosted by Connections Networking Group.

**£30. Includes welcome drinks on arrival. For details contact [Kendra@connectionsnetworkinggroup.com](mailto:Kendra@connectionsnetworkinggroup.com).**



James McCormick

RA

## ANNUAL MUSIC COMPETITION SECTION FINAL: ENSEMBLES B

*Tuesday 8 March, 7pm,  
Princess Alexandra Hall,  
Over-Seas House London*

This is one of the most interesting and entertaining events of the year, as you never know what you will encounter. From small brass bands to recorder quartets, the wind and mixed ensembles section final has had it all in the last few years.

**Tickets £15; Friends of ROSL ARTS £12. Includes wine.**

© Historic Royal Palaces



ME

## BLACK-TIE DINNER IN THE TOWER

*Wednesday 24 February,  
7pm, Tower of London*

See the historical Tower after hours at this special dinner. Enjoy a champagne reception in the Fusiliers' Museum before being called into the Fusiliers' Mess for a delicious three-course meal with wine and port. ROSL Director-General Roddy Porter will lead a toast, after which members will see the Yeoman Warders perform the Ceremony of the Keys.

**£75; guests £85.**

## MARCH 2016

RA

### ANNUAL MUSIC COMPETITION SECTION FINAL: ENSEMBLES A

*Tuesday 1 March, 7pm,  
Princess Alexandra Hall,  
Over-Seas House London*

Chemistry and teamwork are essential for the strings and piano ensembles section as the contestants compete for the £10,000 prize and the chance to perform at the Grand Final in Cadogan Hall on 1 June.

**Tickets £15; Friends of ROSL ARTS £12. Includes wine.**

YM

### FIRST THURSDAY DRINKS

*Thursday 3 March, from  
6pm, Duke of York Bar,  
Over-Seas House London*

Monthly social for Younger Members. Enjoy free music in the Bar while catching up with fellow YMs.

**Free.**

RS

### EDINBURGH FILM NIGHT

*Tuesday 8 March, 5pm,  
Over-Seas House Edinburgh*

A middle-aged butcher and a school teacher who have given up on the idea of love find romance when they meet at a dance. With coffee, popcorn and ice-cream.

**Tickets for entry and refreshments £7.50.**

YM

### INTERNATIONAL WOMEN'S DAY CELEBRATION

*Tuesday 8 March, 7pm,  
Over-Seas House London*

ROSL Younger Members mark International Women's Day in style with exclusive guest speakers and prestigious performers. You are advised to note this date in your diary, as the celebration promises to be a highlight of the 2016 spring calendar.

**£10. Guests welcome.**

James McCormick



ME

### CLUB QUIZ

*Wednesday 9 March, 7.30pm,  
Over-Seas House London*

Get your thinking caps on for ROSL's monthly quiz night. Tickets include a glass of wine, with opportunities to order food and drinks from the Bar.

**£5. Guests welcome.**





## CONTACT DETAILS AND BOOKING INFORMATION

Visit [www.rosl.org.uk/events](http://www.rosl.org.uk/events) for more information on the full programme of events.

### ROSL ARTS

+44 (0)20 7408 0214 ext 219;  
[roslarts@rosl.org.uk](mailto:roslarts@rosl.org.uk)

### ROSL SCOTLAND

+44 (0)131 225 1501;  
[reception@rosl-edinburgh.org](mailto:reception@rosl-edinburgh.org)

### MEMBERS' EVENTS

Book online at [www.rosl.org.uk](http://www.rosl.org.uk)  
Booking confirmations will be sent within 14 days of payment. To reserve a ticket for popular events or if you have trouble booking online, contact Tara Cooper:  
[membersevents@rosl.org.uk](mailto:membersevents@rosl.org.uk); +44 (0)20 7016 6906.

To pay by cheque, send separate cheques (sterling) for each event, payable to 'ROSL', to Members' events, Marketing Department, Over-Seas House, Park Place, St James's Street, London SW1A 1LR.

### YOUNGER MEMBERS

For members aged 35 and under. Book online at [www.rosl.org.uk/events](http://www.rosl.org.uk/events). Inter-Club events must be booked independently via [www.inter-club.co.uk](http://www.inter-club.co.uk). For information about the ROSL YM programme join the Facebook group [facebook.com/groups/roslym](https://www.facebook.com/groups/roslym) or contact Tara Cooper: [membersevents@rosl.org.uk](mailto:membersevents@rosl.org.uk) or Ross Lima: [ross.lima@gmail.com](mailto:ross.lima@gmail.com).

### LONDON GROUP

For London Group members, their guests and ROSL members staying at Over-Seas House London. To join, contact [clivedavidcarpenter@compuserve.com](mailto:clivedavidcarpenter@compuserve.com); +44 (0)7798 824193.

No booking is required for talks. To book outside visits, send a cheque payable to 'London Group, Royal Over-Seas League' and a stamped, addressed envelope to Maureen Howley, London Group, c/o Porters' Desk, Over-Seas House, Park Place, St James's Street, London SW1A 1LR. The London Group is a voluntary organisation and unfortunately cannot take bookings by email or telephone.

Tickets are sent approximately 10 days in advance. Cancellations and refund requests must be made at least two weeks before the event. Contact [howleymaureen@hotmail.com](mailto:howleymaureen@hotmail.com); +44 (0)20 8789 8506.

### DISCUSSION GROUP

No booking is required. All ROSL members and guests are welcome at Discussion Group events. Meetings are held at Over-Seas House London. For details see [www.rosl.org.uk](http://www.rosl.org.uk).

RS

### COMMONWEALTH DAY LUNCH

*Monday 14 March, 12pm, Over-Seas House Edinburgh*  
Guest speaker Commodore Anthony Morrow CVO RN, the last captain to serve on the Britannia, joins us for this celebration in Edinburgh.  
**Tickets £20; guests £25.**

LG

### THE STORY OF PANAMA

*Thursday 17 March, 6pm, Over-Seas House London*  
Richard Thomas gives a talk on the background to and creation of the Panama Canal.  
**Free. London Group members and guests at Over-Seas House only.**

ME

### COMMONWEALTH DAY SERVICE

*Monday 14 March, time tba, Westminster Abbey*  
ROSL members can apply for tickets to this wonderful service, customarily attended by HM The Queen, the Head of the Commonwealth, to celebrate this remarkable association of 53 countries and 2.2 billion citizens.  
**£10; one per member.**

ME

### COMMONWEALTH DAY RECEPTION

*Monday 14 March, time tba, Over-Seas House London*  
Keep this evening free as ROSL hosts a fantastic celebration.  
**£15. Guests welcome.**

## DATES for your diary

### CHAIRMAN'S LUNCH AND AGM

*Tuesday 3 May, Over-Seas House London*

### ANNUAL MUSIC COMPETITION FINAL

*Wednesday 1 June, Cadogan Hall*

### A MIDSUMMER NIGHT'S DREAM BALL

*Saturday 18 June, Over-Seas House London*

### MEMBERS' DINNER

*Friday 24 June, Over-Seas House Edinburgh*



# VENICE SIMPLON-ORIENT-EXPRESS

FOR DISCERNING TRAVELLERS



SAVE OVER £500 PER PERSON



We are delighted to offer new special prices for selected departures on the legendary Venice Simplon-Orient-Express luxury train. These offers allow clients to benefit from a saving of over £500 per person. A journey on this unique train is on every discerning traveller's wish list - there is simply no better way to celebrate a special birthday or anniversary in style.

From the moment you board the train, you take a step back in time to a bygone era when discerning travellers were conveyed from A to B in elegant style. Today guests can still rely on the highest levels of personal service, with delicious cuisine served in a stylish dining car, combined with a private sleeper cabin and civilised bar carriage where you can meet other like-minded travellers. The handsome livery of the British Pullman train and the immaculate Wagons-Lits of the Continental train combine to provide you with a unique and unforgettable experience.

Throughout the journey you will be attended by your cabin steward, and you will enjoy outstanding cuisine prepared by expert chefs - all meals on board are included at no extra cost.



## FLY TO VENICE AND RETURN BY VSOE:

4 APRIL OR 18 APRIL 2016 (book by 31 January 2016)  
4 JULY OR 13 OCTOBER 2016 (book by 30 April 2016)

### Londra Palace \*\*\*\* Deluxe

Located right on the waterfront, a few steps from St. Mark's Square, the Londra Palace is one of our favourite hotels in Venice. It has a bar, a comfortable lounge, the 'Do Leoni' restaurant with terrace overlooking the lagoon and 53 bedrooms which are amongst the finest in the city. Prices based on Deluxe Lagoon View rooms.

2016: 3 night holiday price (1 night VSOE, 2 nights hotel):  
Price from £2,598, saving up to £609

### Liassidi Palace \*\*\*\* Superior

Located a short walk from St. Mark's Square and the lagoon, you enter from the pretty Calle della Madonna, through a courtyard filled with lemon and jasmine trees. Each of the 26 bedrooms combines traditional Venetian style with some modern twists. Buffet breakfast is served in a room overlooking the San Lorenzo canal.

2016: 3 night holiday price (1 night VSOE, 2 nights hotel):  
Price from £2,409, saving up to £609

Prices include: One night in a private cabin on board the Orient-Express with all meals (excluding drinks), one way flight between London and Venice, accommodation in Venice with breakfast, water taxi transfers, guaranteed entrance tickets to either the Doge's Palace, Accademia or Guggenheim, our unique Venice Guide Notes and map and the services of the Kirker Concierge. Opera tickets at La Fenice available on request.

Speak to an expert or request a brochure:

020 7593 2283 quote code GRO

www.kirkerholidays.com

ABTA  
ABTA No. 10595

AITO  
Assured

ATOL  
Protected

**Kirker**

FOR DISCERNING TRAVELLERS



**ALGERIA: ROME MEETS THE SAHARA**  
WITH ARCHAEOLOGIST PHILIP KENRICK, APRIL 10–22, 2016

# Worldwide Cultural Travel

The Association for Cultural Exchange was established in 1958, making us the UK's most experienced cultural travel tour operator. Join our expert Tour Directors on small group tours that cover every aspect of the arts, from art, architecture and archaeology, to music and natural history.



## 17th & 18th Century Art in Naples

*March 29 – April 2, 2016*

Immerse yourself in the golden age of Neapolitan painting under the guidance of an expert art and architecture historian.



## Belle Epoque Paris

*April 21–24, 2016*

Evoke the glamour of turn of the century Paris on this exploration of the city's Art Nouveau interiors and splendid collections.



## Ottoman Turkey

*April 24 – May 4, 2016*

Survey over 500 years of Ottoman rule among the studded skylines of Istanbul, Bursa, Troy, and Edirne.



## A Journey Through the Great War

*May 30 – June 4, 2016*

Trace the chronology of the Great War from its outbreak to the final Allied victory on the Somme in 1918.

**CALL US FOR OUR NEW 2016 BROCHURE**  
01223 841055 • [www.aceculturaltours.co.uk](http://www.aceculturaltours.co.uk) • [ace@aceculturaltours.co.uk](mailto:ace@aceculturaltours.co.uk)

## ACE CULTURAL TOURS

PROVIDING EXPERT-LED TOURS SINCE 1958

Stapleford Granary, Bury Road, Stapleford, Cambridge, CB22 5BP Tel: 01223 841 055 [www.aceculturaltours.co.uk](http://www.aceculturaltours.co.uk)

